



Brewery Catalog

April, 2012

www.gwKent.com

www.BreweryParts.com



Terms & Prices:

- Upon credit approval, our terms are net 10 days from date of invoice. We accept credit cards.
- **Minimum order of \$50.00 is required.**
- All prices are FOB Michigan warehouse.
- **Prices in print catalog are subject to change without notice. Prices will be updated online.**
- All information and specifications in this catalog puts forth in good faith but makes no guarantee, expressed or implied, concerning the use or misuse of the products or data listed.



Business Hours:

Monday - Friday 9 am - 5 pm (Eastern Time)

Holiday Closing: All major holidays
Please see posting on www.gwkent.com

Shipping:

We use Fedex service and common carrier trucking. We will determine carriers based on trucking requirement, price and commodities. Freight charges are prepaid and billed on your invoice.

Damage or Loss Claims:

- **Any discrepancy or damages must be noted on freight bill** and signed by driver at the time of delivery so trucking company will honor the claim.
- We will not be responsible for any damage or loss if a freight bill does not note damages or shortage with signature from driver.

Returns:

- We will email return authorization form to you. **Return Authorization must accompany product return.** To request return, please email us.
- Merchandise must be less than 30 days old from date of invoice and brand new in original packaging.
- **Returned merchandise subject to 25% re-stocking charge and freight expenses.**
- Machinery, tanks, pumps and barrels are subject to manufacturer's warranty and repair policy, we can not accept returns for above mentioned products.
- Return freight cost and original shipping charge are not refundable.

Customer Pick Up:

- Please allow 24 to 48 hours of order processing time for pick up at our Ypsilanti warehouse.
- **Dock Hours: 9 am - 4 pm Monday - Friday**

Easy ordering ...

Shop Online
www.gwkent.com
info@gwkent.com



Call toll-free

800.333.4288



Order by Fax

800.500.7505



International Orders

Phone: 734.572.1300

Fax: 734.572.0097



info@gwkent.com

Table of Contents

Barrels.....	52 - 56
• Barrel Racks	
• Accessories & Tools	
Beer Bottling Line	16
Beer Fermenter	4 - 11
Beer Kegs & Kegging Equipment	17 - 19
• Kegs	
• Coupler	
• Keg Filling	
• Regulator	
Brewhouse	7 - 9
Bright Tank	6 - 11
Carbonation System	14
CIP	71 - 75
• CIP Equipment	
• CIP Spray Ball	
• Cleaning Chemicals	
Distilling	84
Filtration	62 - 66
• Filter Machine	
• Filter Sheets Pall/Seitz	
• Membrane Cartridge	
• Sil-Kleer Filter Aids	
Fittings - DIN	49
Fitting & Valves - Butt Weld	48
• Butterfly Valve Butt Weld	
• Check Valves Butt Weld	
• Elbow - butt weld	
• Reducer butt weld	
• Sight Glass Butt Weld	
• Tee Butt Weld	
Fitting & Valve - NPT	38 - 41
• NPT Ball Valve	
• NPT pipe fittings	
• Globe Valve & Gate Valve	
Fittings & Valves - TC	25 - 47
• Butterfly Valves	
• Ball Valves Tri-clamp	
• Check Valve	
• Tri-clamp	
• Gasket	
• Adaptor NPT to TC	
• Hose Barb Adaptor	
• Sight Glass	
• Solid End Caps	
• Cross	
• Elbow	
• Ferrules	
• Reducer - Concentric	
• Reducer - Eccentric	
• Reducer - End Cap Reducer	
• Tee	
• Y	
• CIP Spray Ball	
• Beer Nut	
Flow Meter	15
Food Grade Lubricants	74



Hose	73 - 77
• Good Year Nutriflo Hose	
• Good Year Vintner Hose	
• Goodyear Pliovic Hose	
• FDA Rubber Hose	
• Hose Barb	
• Hose Clamps	
• Hose Rack & Cleaning Sponge Ball	
Hygienic Tools	75
Lab Equipment	78 - 82
• Refractometers	
• pH Meters	
• Hydrometers	
• Thermometer	
• Glassware	
Malt	57 - 58
• Durst Malt	
• Briess Malt	
• Briess Adjuncts	
• Briess Malt Extract	
Mesh Bag	55
Packaging Equipment	20 - 23
• Bottle Fillers	
• Corking & Capping Machine	
• Bottle Rinsers	
• Labeling Machines	
Packaging Supply	20 - 24
• Champagne Corks	
• Bottles	
• Crown Caps	
• Keg Caps	
RTD Probe	13
SPULBOY Glassware Cleaning Machine	23
Tank Components	42 - 47
• Sample Valve	
• Tank Sight Gauge Valve	
• Tank Thermometer	
• Tank Thermometer Well	
• Vacuum & Pressure Relief Valve	
• Manway Doors	
Temperature & Control	67 - 71
• Glycol Chillers	
• Motorized Valves	
• Solenoid Valves	
• Thermometers	
• Pressure Gauges	
• Temperature Controllers	
• Quick Disconnect	
Washdown Equipment	72 - 73
Yeast & Cellar Chemicals	59 - 61
• Yeast	
• Cellar Chemicals	
Yeast Propagation Tank	17

© G.W. KENT, INC. March, 2012

© G.W. KENT, INC. March, 2012

Beer Fermenter



Largest tank stock in America.

Quick delivery from Michigan.



© G.W. KENT, INC. March, 2012

© G.W. KENT, INC. March, 2012

Certified 304 stainless steel material and components, sanitary construction 100% TIG welded and sanitary polished with stringent controls, inspection and pressure testing. We guarantee unsurpassed tank quality and fantastic value with all valves and fittings included at no additional cost. We custom fabricate tanks to meet brewery's space restrictions and we stock tanks with standardized specifications for quick delivery. Design pressure at 15 psi to meet standard brewing industry requirements. Custom configuration available.

Features:

- Design pressure 15 psi
- Interior shell: 304 stainless steel, thickness 11 gauge
- Exterior shell: 304 stainless steel, thickness 14 gauge
- Interior and exterior finish bright polish to 250 grit, hygiene surface
- 60 degree cone bottom, with 25% head space
- Racking port and discharge port with butterfly valve and fittings
- Side manway door, shadowless
- Dual zone dimple cooling jacket with glycol inlet and outlet (3 zone for larger tank)
- Polyurethane insulation thickness 2" for cooling jacket on side and bottom
- Fully welded exterior shell
- 4 stainless steel legs with leveling foot pads in stainless steel
- CIP arm and spray ball. Co2 Blow-off arm in 2"
- Rotating tank racking arm
- Vacuum & pressure relief valve, relief pressure 15 psi
- Pressure gauge
- Thermometer
- Perlick style Sample valve
- Tank complete with fittings, valves and all parts



Item	Capacity	Diameter	Height	Catalog	Price
7 barrel Fermenter	217 gal.	45"	96"	588-1	\$7,895.00
10 barrel Fermenter	310 gal.	53"	96"	588-2	\$9,295.00
15 barrel Fermenter	465 gal.	60"	109"	588-3	\$11,495.00
20 barrel Fermenter	620 gal.	60"	125"	588-4	\$13,595.00
30 barrel Fermenter	930 gal.	72"	143"	588-5	\$15,995.00
40 barrel Fermenter	1240 gal.	80"	153"	588-6	\$19,195.00
50 barrel Fermenter	1550 gal.	80"	172"	588-7	\$23,795.00
60 barrel Fermenter	1860 gal.	80"	192"	588-8	\$25,495.00
80 barrel Fermenter	2480 gal.	custom	custom	588-9	\$30,995.00
100 barrel Fermenter	3100 gal.	custom	custom	588-10	\$33,495.00



Brite Tank

304 stainless steel, sanitary construction 100% TIG welding and sanitary polish with stringent controls, inspections and pressure testing. We guarantee unsurpassed tank quality and fantastic value with all valves and fittings included at no additional cost.

Features:

- Design pressure 15 psi
- 4 stainless steel legs with leveling feet
- Interior shell: 304 stainless steel, thickness 11 gauge
- Exterior shell: 304 stainless steel, thickness 14 gauge
- Interior and exterior finish bright polish to 250 grit.
- Flanged and dished head top and bottom, 25% head space
- Racking port and discharge port with butterfly valve & fittings
- Side manway door
- Dual zone cooling jacket (3 zone for larger tank)
- Polyurethane insulation thickness 2" for cooling jacket
- Fully welded exterior shell
- CIP arm and spray ball
- Carbonation system with 1" x 8" stone with built-in check valve.
- Vacuum & pressure relief valve, relief pressure 15 psi,
- Pressure gauge, Thermometer, Perlick style sample valve
- Tank complete with fittings, valves and all parts



Jacketed Brite Tank	Capacity	Diameter	Height	Jacket	Catalog	Price
7 Barrel Bright Tank	217 gal.	45"	81"	Double wall/insulated	575-1	\$7,895.00
10 Barrel Bright Tank	310 gal.	49"	91"	Double wall/insulated	575-2	\$9,295.00
15 Barrel Bright Tank	465 gal.	57"	94"	Double wall/insulated	575-3	\$11,495.00
20 Barrel Bright Tank	620 gal.	60"	104"	Double wall/insulated	575-4	\$13,595.00
30 Barrel Bright Tank	930 gal.	64"	128"	Double wall/insulated	575-5	\$15,995.00
40 Barrel Bright Tank	1240 gal.	72"	126"	Double wall/insulated	575-6	\$19,195.00
50 Barrel Bright Tank	1550 gal.	custom	custom	Double wall/insulated	575-7	\$23,795.00
60 Barrel Bright Tank	1860 gal.	76"	151"	Double wall/insulated	575-8	\$25,495.00
80 Barrel Bright Tank	2480 gal.	custom	custom	Double wall/insulated	575-9	\$30,995.00
100 Barrel Bright Tank	3100 gal.	custom	custom	Double wall/insulated	575-10	\$33,495.00

Single Wall Brite Tank	Capacity	Diameter	Height	Catalog	Price
7 barrel Single Wall Bright Tank	217 gal.	43"	81"	586-1	\$5,295.00
10 barrel Single Wall Bright Tank	310 gal.	47"	91"	586-2	\$6,295.00
15 barrel Single Wall Bright Tank	465 gal.	55"	94"	586-3	\$7,495.00

© G.W. KENT, INC. March, 2012

© G.W. KENT, INC. March, 2012

Brewhouse



Our two vessel brewhouse system is designed to serve craft brewers for producing high quality beer efficiently. Brew-house is made of premium quality 304 stainless steel, integrated with a pump, heat exchanger, stainless steel brewing platform, valves, sight glass, condensation stack, manual control panel and process piping in a compact and sanitary modular system. The two vessels consist of a combined vessel of mash / lauter tun on top and hot liquor tank on bottom, and another combined vessel of brewkettle / whirlpool. The brewhouse system includes butterfly valves, ball valves, sight glasses, check valves and hard plumbing for all transfers between vessels, CIP cleaning and beer out through the heat exchanger, and it complies with highest sanitary processing standards.



CIP Spray ball and sparging spray head.



Heat exchanger and stainless steel hard piping set up.

Mash / Lauter Tun / Hot Liquor Tank Combine Vessel separating wort from grain and storing hot liquor.

- Dished top vessel, lauter tun has v-wired false bottom and hot liquor tank has a sloped bottom.
- Lauter tun is equipped with top mounted light, and side mounted grain out door and grain chute.
- Hot Liquor Tank equipped with level sight gauge and side mounted manway.

Material:

- Interior shell: 11 gauge stainless steel polished to 250 grit, fully welded, ground and polished hygiene surface.
- Exterior cladding: 14 gauge 2B finished, fully welded, ground and polished.
- Dished head with conical floor. A mash hydration unit on top of tank for complete doughing in of grain.
- Insulation: Polyurethane foam 2" thickness.

Brewkettle / Whirlpool Combine vessel for infusion or decoction mashing, wort boiling, precipitating protein & polyphenols.

- Steam jacket on the bottom and side of vessel to heat the wort.
- Sanitary centrifugal pump with variable speed control and water cooled bearings.
- Equipped with condensation stack with water spray nozzles.

Material:

- Internal shell: 11 gauge stainless steel polished to 250 grit, fully welded, ground and polished hygiene surface.
- External cladding 14 gauge 2B finished, fully welded, ground and polished.
- Insulation: Polyurethane foam 2" thickness.



Back view of the HLT and Mash / Lauter Tun set up.



Temperature probe installed in Mash / Lauter Tun.



Control panel wiring.

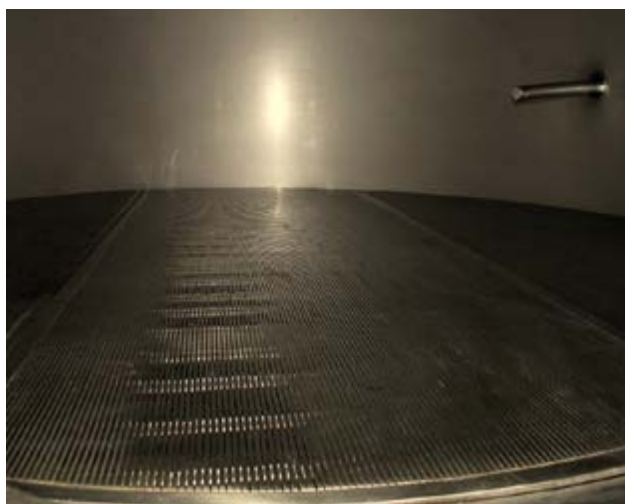


Wort out of the heat exchanger with thermometer and sight glass.

Optional equipment includes mash mixer, lauter tun rakes, automatic control with air actuated valves, copper cladding, boiler and glycol system.



Grain out manway and grain chute installed.



Lauter screen in Mash / Lauter Tun.



Control panel.



Hydrator at the top of Mash / Lauter Tun.



Condensate stack and water spray control.

© G.W. KENT, INC. March, 2012

© G.W. KENT, INC. March, 2012

Micro-Fermenter

New fermenter & brite tank at economical price to meet budget of many start up breweries. with guaranteed quality material and construction. 304 stainless steel material and components, sanitary construction 100% TIG welded and sanitary polished with stringent controls. All valves and fittings are included at no additional cost.

Features:

- Design pressure 15 psi
- Material 304 stainless steel, interior shell 11 gauge and cladding 16 gauge.
- Interior and exterior finish bright polish
- 60° cone bottom, with 25% head space
- Racking port and discharge port with butterfly valve and fittings
- Side manway door.
- Dual zone dimple cooling jacket with glycol inlet and outlet
- Polyurethane insulation thickness 2" for cooling jacket on side and bottom
- 4 stainless steel legs with leveling foot pads in stainless steel
- CIP arm and spray ball
- Rotating tank racking arm
- Vacuum & pressure relief valve
- Pressure gauge
- Thermometer
- Sample valve
- Tank complete with fittings, valves and all parts



Item	Capacity	Diameter	Height	Catalog	Price
3 Barrel Fermenter	93 gal.	36"	79"	558-03	\$4,695.00
5 Barrel fermenter	155 gal.	42"	87"	558-05	\$5,495.00
7 barrel Fermenter	217 gal.	46"	99"	558-07	\$6,295.00
10 barrel Fermenter	310 gal.	54"	100"	558-10	\$7,295.00
15 barrel Fermenter	465 gal.	62"	106"	558-15	\$9,395.00
20 barrel Fermenter	620 gal.	TBA online	TBA online	558-20	\$11,595.00
30 barrel Fermenter	930 gal.	TBA online	TBA online	558-30	\$13,995.00



© G.W. KENT, INC. March, 2012

Micro-Brite Tank

304 stainless steel, sanitary construction 100% TIG welding and sanitary polish with stringent controls, inspections and pressure testing. We guarantee tank quality. All valves and fittings included at no additional cost.

Features:

- Design pressure 15 psi
- 4 stainless steel legs with leveling feet
- Interior shell: 304 stainless steel 11 gauge and cladding 16 gauge.
- Interior and exterior finish bright polish.
- Flanged and dished head top and bottom, 25% head space
- Racking port and discharge port with butterfly valve & fittings
- Side manway door
- Dual zone cooling jacket
- Polyurethane insulation thickness 2" for cooling jacket
- CIP arm and spray ball
- Pico Carbonator
- Vacuum & pressure relief valve, relief pressure 15 psi,
- Pressure gauge, Thermometer, Perlick style sample valve
- Tank complete with fittings, valves and all parts



Jacketed Brite Tank	Capacity	Diameter	Height	Jacket	Carbonator	Catalog	Price
5 Barrel Bright Tank	155 gal.	38"	67"	Double wall / insulated	1/4" x 4" L.	556-05	\$5,495.00
7 Barrel Bright Tank	217 gal.	42"	75"	Double wall / insulated	7/8" x 5" L.	556-07	\$6,295.00
10 Barrel Bright Tank	310 gal.	46"	87"	Double wall / insulated	7/8" x 5" L.	556-10	\$7,295.00
15 Barrel Bright Tank	465 gal.	TBA online	TBA online	Double wall / insulated	7/8" x 5" L.	556-15	\$9,395.00

Single Wall Brite Tank	Capacity	Diameter	Height	Carbonator	Catalog	Price
3 barrel Single Wall Bright Tank	93 gal.	32"	61"	1/4" x 4" L.	566-03	\$2,595.00
5 barrel Single Wall Bright Tank	155 gal.	36"	67"	1/4" x 4" L.	566-05	\$2,995.00
7 barrel Single Wall Bright Tank	217 gal.	40"	75"	7/8" x 5" L.	566-07	\$3,795.00
10 Barrel Single Wall Brite Tank	310 gal.	44"	87"	7/8" x 5" L.	566-10	\$4,795.00
15 Barrel Single Wall Brite Tank	465 gal.	TBA online	TBA online	7/8" x 5" L.	566-1556	\$5,995.00



© G.W. KENT, INC. March, 2012

Speciality Tanks

Hot Liquor Tank



Item	Catalog	Price
10 barrel Hot Liquor Tank	577-2	\$9,350.00
15 barrel Hot Liquor Tank	577-3	\$13,500.00
30 barrel Hot Liquor Tank	577-4	\$18,500.00
40 barrel Hot Liquor Tank	577-5	\$21,500.00
60 barrel Hot Liquor Tank	577-6	\$28,500.00

Yeast Propagation Tank

Tank with cooling jacket for yeast propagating, sanitary construction and designed in 304 stainless steel. Net capacity is 3 bbl. (100 gallon). We custom build larger capacity yeast tanks to meet your needs.

Features:

- Dimple jacket on shell and cone, 60 degree cone bottom with 4 legs welded.
- CIP set up, racking arm with 1-1/2" TC butterfly valve, discharge valve
- Top manway door, vacuum & pressure relief valve
- Thermometer and thermometer well
- Diameter 36" x height 68"

Catalog #2539 - \$4,995.00



Keg for Yeast Propagation

Brand new converted 15.5 gal. keg designed for yeast propagation or special storage needs.

Features:

- 4" neck opening for easy cleaning. Includes a 4" end cap reducer to 1-1/2" TC, gasket & clamp.
- Transfer port in 1-1/2" TC ferrule welded on bottom side wall.
- Catalog #2531 - \$350.00



Stainless Steel Barrels 75 gallon

Designed to fit on barrel rack for portability and stackability. Sanitary construction and polish, easy to clean. Perfect storage solution for small lot storage.

Features:

- Made of 304L stainless steel, 14 gauge (2 mm thickness)
- 75 gallons capacity with one 2" TC ferrule welded on belly.
- Fits on standard barrel rack, with roll rim.
- Measurement: 25.6" diameter x 40" height

Catalog #2757 \$849.00



© G.W. KENT, INC. March, 2012

© G.W. KENT, INC. March, 2012

350 gal. IBC Stainless Steel Transport Tank

Feature:

- UN compliant 31AY, approved for group II & III.
- Material: 304 stainless steel 10 gauge and 2B finished.
- Top manway 22" with EPDM gasket, vent and clamp ring.
- Sloped bottom for 100% discharge.
- 2" NPT ball valve for bottom discharge.
- Stackable 2 high. Heavy duty lifting lugs & leg positioners.

Catalog #2753 - \$2,995.00



550 gal. IBC Stainless Steel Transport Tank

Catalog #2754 - \$4,595.00

RTD Probe

Negele of Bavaria, Germany designs and manufactures innovative instruments and control products for brewery, pharma & food applications. Negele sensors are well known as premium quality control components. We stock Negele RTD probes, and we special order Negele's Turbidity Sensor, Conductivity Sensors, Level Measurement Sensor, Pressure Sensor Flow Switch and control instruments. All Negele sensors are available in a wide range of configurations to meet each brewery's unique process needs.

Sanitary RTD Probe with 1.5" TC connection, large 55 mm. head is provided with a removable cap, and as such is available with more output and display options.

Features:

- Probe diameter is 6 mm (1/4").
- 316 L. stainless steel
- Accuracy: +/- 0.15 Deg. C
- Temperature: -0 - 100 deg. C (32 - 212 deg. F.)
- Pressure: 150 psi max.
- Electrical connection M12, no transmitter.



Item	Prob Dia.	Probe L.	Electrical Connection	Tank Connection	Catalog	Price
Sanitary RTD Probe	1/4"	2"	M12	1-1/2" TC	2824-1	\$295.00
Sanitary RTD Probe	1/4"	4"	M12	1-1/2" TC	2824-2	\$319.00
Sanitary RTD Probe	1/4"	5"	M12	1-1/2" TC	2824-3	\$319.00
Sanitary RTD Probe	1/4"	6"	M12	1-1/2" TC	2824-4	\$319.00
Sanitary RTD Probe	1/4"	9"	M12	1-1/2" TC	2824-5	\$319.00

Carbonation Stone

Pico Carbonator

For carbonation or micro-oxygenation of beer for tank mount installation or in-line installation. Sanitary designed and construction with diffusing stone diameter 1/2" and 7/8".

- Diffusing stone is 316 stainless steel and 2 micron rating.
- Tank connection is 1-1/2" TC.
- Gas connection is 1/4" NPT female.



Item	Carb. Stone	Total Length	Connection	Catalog	Price
Pico carbonator 1/2" x 4"	Dia. 1/2" x 4" L.	5-7/8"	1.5" TC	85-56	\$79.00
Pico Carbonator 7/8" x 5"	Dia 7/8" x 5" L	6-3/4"	1.5" TC	85-59	\$89.00
Pico Carbonator 7/8" x 8"	Dia. 7/8" x 8" L.	9-5/8"	1.5" TC	85-57	\$99.00

Micro-Oxygenation Carbonation Stone Assembly

Sanitary designed for tank mounting, with built-in check valves and pipe extension. The most efficient system on the market. Submersing porous body diffuses CO2 gas directly into liquid to create carbonation or micro-oxygenation. Using carbonation, it is possible to remove excessive quantity of dissolved air. Small quantity of unabsorbed gas passing up through liquid and being relieved from top of the tank carries off the undesirable air. Diffusing stone is 316L stainless steel with 1" OD x 8" long and 2 micron porosity. Sanitary design and construction, the whole assembly can be taken apart for cleaning and diffusing stone can be replaced if clogged.



- Diffusing stone is 316 stainless steel 1" OD and 2 micron rating.
- Assembly consist 8" extension into tank and a check valve.
- Tank connection is 1-1/2" TC.
- Gas connection is 1/4" NPT female.

Item	Carb. Stone	Total Length	Connection	Catalog	Price
8" Carbonation Stone Assembly	Dia. 1" x 8" L.	18-1/2"	1.5" TC	85-50	\$275.00
12" Carbonation Stone Assembly	Dia. 1" x 12" L.	22-1/2"	1.5" TC	85-53	\$345.00
Replacement 8" stone	OD 1"	8"		85-54	\$115.00
Replacement 12" stone	OD 1"	12"		85-55	\$145.00

Inline Carbonation System

Heavy duty, sanitary built micro-oxygenation or carbonation system.

- Diffusing stone is 316 stainless steel 1-1/2" OD x 4" length
 - 2 micron rating.
 - Built-in sight glass
 - Connection is 1-1/2" TC.
 - Gas connection is 1/4" ball valve with a hose barb
- Catalog #85-45A \$345.00



© G.W. KENT, INC. March, 2012

Electromagnetic Flow Meter



Electromagnetic Flow Meter

New generation, extremely accurate and proven design electromagnetic flow-meter from Anderson Instrument, utilizing sophisticated signal processing and circuit design to provide superior performance in a standard integral design that simplifies installation and start up. Measurement is unaffected by changes in viscosity, density or temperature. Flowmeter offers one scaled pulse output as standard, with an additional analog output as an option. Equipped with a display, access to two resettable totalizers and a rate indicator.

Specifications:

- Maximum Cleaning temperature 250° F.
- Accuracy: +/- 0.25%
- Maximum pressure 145 psi. Minimum pressure 7 psi
- Material: housing 304, electrodes 316L.
- Remote with cable optional available.



Item	Flow Rate	Connection	Catalog	Price
Electromagnetic Flow Meter 1"	0.8 - 80 gpm	1.5" TC	985-4	\$3795.00
Electromagnetic Flow Meter 1-1/2"	1.3 - 130 gpm	1.5" TC	985-5	\$3895.00
Electromagnetic Flow meter 2"	3 - 300 gpm	2" TC	985-6	\$4195.00

Turbine Flow Meter

Turbine flow meter is used to measure fluid passed through the meter housing, and causes a rotor to spin with a rotational speed equivalent to the velocity of the fluid. Durable 316L stainless steel 2 piece design with rulon sleeve bearing, provides accurate reading. Rater/Totalizer is included with all meters.

Sanitary Turbine Flow Meter

Sanitary design and construction, meets 3-A sanitary standards and includes rater totalizer display in gallon. (display in liter special order only).

- Accuracy: +/- 0.5%
- Maximum temperature 250° F
- Maximum pressure 115 psi.



Item	Flow Rate	Turbin Size	Connection	Catalog	Price
Sanitary Turbine Flow Meter 1-1/2"	13 - 130 gpm	1-1-1/2"	1.5" TC	985-1	\$2995.00
Sanitary Turbine Flow meter 2"	25 - 250 gpm	2"	2" TC	985-9	\$3095.00



Econo Turbine Flow Meter

Cost effective and accurate turbine flow meter with rater/totalizer to provide flow rate per minute and total flow volume.

- Accuracy: +/- 1.0% accuracy,
- Maximum temperature -100° to 300° F
- Maximum pressure 600 psi.



Item	Flow Rate	Turbin Size	Connection	Catalog	Price
Econo Turbine Flow Meter 1"	0 - 50 gpm	1"	1.5" TC	985-8	\$895.00
Econo Turbine Flow meter 1-1/2"	15 - 180 gpm	1.5"	1.5" TC	985-9	\$995.00



Beer Bottling Monobloc

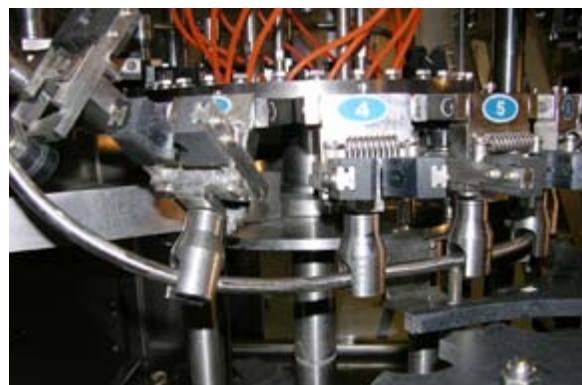


Rinser · Filler · Crowner

Automatic bottling line for beer, cider or any carbonated beverage, 3 functions in 1. Our RFC 16 and RFC 24 monobloc rinses and cleans bottles first, then fills and applies crown caps to bottles. Bottling line is controlled by a Mitsubishi PLC controller. Bottles move via conveyor and rotating star to each function automatically. Compact and sanitary designed made of 304 stainless steel and with flexibility of bottle height adjustment. Filler designed with state of the art nozzle with double evacuation for minimal O₂ during bottling operation. Production speed is 50 bpm to 100 bpm and speed is adjustable. Our 16 head and 24 head models are designed for craft brewers and price starts at 95K.

Bottle Height:
4.0" - 11.8" (105 - 300 mm.)

Bottle Diameter:
1.9" - 3.3" (50 - 85 mm)



Beer Kegs

1/2 Barrel Sankey Beer Kegs

Brand new keg 15.5 gallon with Sankey tapping spear, made of 304 stainless steel.
Catalog #2533 - \$159.00

1/6 bbl. Sankey Beer Kegs

Brand new keg 5.16 gallon with Sankey tapping valve. Made of 304 stainless steel with polypropylene rings at the top and bottom. Keg diameter 9.41" and height is 21". Max. operating pressure is 44 psi.
Catalog #2536 - \$130.00

O-ring for Sankey Keg Spear

EPDM, FDA material
Catalog #2509 - \$1.00

Keg Spear Removal Knife

Catalog #2533A - \$12.00

Keg for Yeast Propagation

Brand new converted 15.5 gal. keg designed for yeast propagation or special storage needs.

Features:

- 4" neck opening for easy cleaning. Includes a 4" end cap reducer to 1-1/2" TC, gasket & clamp.
- Transfer port in 1-1/2" TC ferrule welded on bottom side wall.
- Catalog #2531 - \$350.00

Yeast Propagation Tank

Tank with cooling jacket for yeast propagating, sanitary construction and designed in 304 stainless steel. Net capacity is 3 bbl. (100 gallon). We custom build larger capacity yeast tanks to meet your needs.

Features:

- Dimple jacket on shell and cone, 60 degree cone bottom with 4 legs welded.
- CIP set up, racking arm with 1-1/2" TC butterfly valve, discharge valve,
- Top manway door, vacuum & pressure relief valve,
- Thermometer and thermometer well.
- Diameter 36" x height 68"

Catalog #2539 - \$4,995.00



© G.W. KENT, INC. March, 2012

© G.W. KENT, INC. March, 2012

Kegging Parts

Stainless Steel Coupler Filling Head

Designed for filling kegs and washing kegs with American Sankey coupler. Keg is inverted and wash solutions are injected under pressure through beer outlet. Cleaning chemicals and rinse water enter keg through the keg valve and cascade down the inverted keg's inner surface. The wash solution and rinse water is then evacuated through the keg valve CO2 port on the coupler.

Features:

- Enlarged opening allowing fast liquid flow.
- Stainless steel body, stainless steel handle and stainless steel probe, chemical resistant and long service life.

Catalog #2512 \$99.00



Proline Keg Filler Head

Simple design and handy tool for small volume of keg filling in brewery operation. Affordable and time saving device for start-up operation.

- Equipped with Sankey keg coupler and bleed off valve.
- Automatic beer stop when keg is full. No wasted beer!
- Hose barb connection is 1/2".

Catalog #5925 \$195.00



Beer Keg Coupler - American Sankey

Beer keg coupler connects to keg valve for tapping beer. CO2 gas line and beer hose attach to the coupler.

Features:

- Stainless steel body, stainless steel handle and stainless steel probe.
- American Sankey.

Catalog #2511 \$34.95



Beer Line Shutoff Valve

Stainless steel ball valve with beer nut connection for shutoff.

Catalog #2515 - \$24.50



Draft Beer Foam Control Detectors

Wasted beer multiplied per glass cuts into profits, save money with draft beer foam control detectors.

Features:

- Stainless steel wall mount for all long draw beer lines.
- Eliminates foam and wasted beer when keg is blown.
- 6 kegs of saving will pay for itself.

Catalog #2514 - \$139.00



© G.W. KENT, INC. March, 2012

Beer Nut with 1-1/2" TC

For connecting serving tank to beer line. Tail piece is not included.

Catalog #85-05 \$19.00



Beer hex Nut with bent tail and washer

Draft dispensing line use, for connecting to beer nut (#85-05) and draft beer line. Part includes hex nut, 90 degree bent tail in 3/8" OD and washer. Beer nut is not included.

Catalog #85-05A	Beer hex nut with bent tail & washer	\$6.95
Catalog #85-05E	Beer Hex nut	\$1.50
Catalog #85-05F	1/2" straight tail piece	\$1.50
Catalog #85-05G	3/8" straight tail piece	\$1.50
Catalog #85-05H	Bent tail piece	\$5.00



Beer Line Y - stainless steel

Stainless steel Y for beer line connection.

Catalog #2513 \$24.00



Shut-off with built in Check Valve

Shut-off, with built in check valve to prevent back flow to protect regulator.

Connection is 1/4" NPT male to 3/8" hose barb.

Catalog #85-58 \$12.50



CO2 Quick Coupler 5/16"

Quick disconnect coupler for CO2 line with hose barb end in 5/16". Parts consist of a male and a female end.

Catalog #6033-9 \$19.00

Regulators

Premium quality regulator for mixed gas and nitrogen, built for durability with forged brass body and chrome plated finish.

Double Gauge CO2 Regulator

Features:

- Safety pressure relief valve release at 55 - 65 psi.
- Output Pressure: 0 - 60 psi
- Tank Pressure: 0 - 3000 psi.
- Barb connection: 3/8" OD (fit 5/16" ID gas hose).

Catalog #2517 - \$69.95

Double Gauge Nitrogen Regulator

Features:

- Safety pressure relief valve release at 55 - 65 psi.
- Output Pressure: 0 - 60 psi
- Tank Pressure: 0 - 3000 psi.
- Barb connection: 3/8" OD (fit 5/16" ID gas hose).

Catalog #2518 - \$75.00

Double Gauge Mix-Gas Regulator

Features:

- Adjust pressure from 10 to 110 psi.
- Output Pressure: 0 - 120 psi.
- Tank Pressure: 0 - 3000 psi.
- Barb connection: 3/8" OD with shut-off.

Catalog #2519 - \$79.00



Bottle Fillers

6 Spout Gravity Filling Machine

A manual gravity filling machine, sanitary design made of 304 stainless steel. Best gravity filler on the market, offers many years of easy and trouble free bottling.

Features:

- Superior designed filling nozzles with automatic shut-off, fills every bottle at the same height.
- Fill heights can be adjusted in seconds by twisting filling head.
- Accommodates wide range of bottle heights with easy sliding bottle tray adjustment.
- Large holding tank with stainless steel float system, beverage can be pumped in or fed by gravity with connection in 1-1/2" TC.
- Easy to clean and very low maintenance cost.
- Production rate is about 700 bottles per hour.

Catalog #2477 - \$1,795.00



Sparkling Filling Machine

A manual counter pressure filling machine for any carbonated beverage, made of 304 stainless steel for small lot commercial production. Liquid tank with large sight glass and pressure gauge. Equipped with pressure relief valve. Purge bottle with gas prior liquid filling. Table top designed with protective polycarbonate cover for bottling.

Item	Production rate	Catalog	Price
2 station Sparkling Filling Machine	100 bottle /hr	3359-2	\$6295.00
4 station Sparkling Filling Machine	200 bottle/hr	3359-4	\$8695.00



Capper

Pneumatic Capper Air-Matic

Semi-automatic pneumatic capping machine in 304 stainless steel suitable for small production of champagne, cider or beer.

Features:

- Use with diameter 26 mm or 29 mm crown cap.
- Production rate is 500 - 600 bottles per hour.
- Equipped with adjustable height, two lever handle activation and protective bottle cover.

Catalog #2010 - \$895.00



© G.W. KENT, INC. March, 2012

Champagne Corker

Rapid 49 Champagne Corker

Rapid 49 champagne corker, sturdy frame and heavy duty brass jaw with wirehood tightener. This champagne corker is made with Swiss precision and attention to detail. Just pull compress lever to compress cork, and pull insertion lever to insert cork and form mushroom top. Perfect for small producer.

Specification:

- 4 pcs. brass iris jaw and compressed cork to diameter 16 mm.
- Works with maximum cork length 51 mm
- Works with bottle neck opening 18 mm.
- Maximum bottle height 400 mm.
- Wirehooder, holds champagne wire on to bottle for manual tightening.

Catalog #2015-49 - \$3,995.00

Champagne Corking Machine

Semi-automatic corker in 304 stainless steel suitable for small production of champagne, cider or beer.

Specifications:

- Stainless steel jaw to compress champagne cork with nitrogen injection set up
- Cork feeding holds about 100 corks.
- 1 hp motor 1-phase 220 V. 60 Hz.
- Production rate is 1000 bottles per hour.
- Pedal switch for cork activation.

Catalog #2018 - \$8,695.00

Champagne Caging Machine

Hydraulic caging machine for champagne wire, cages are guided using magnet with automatic turn over of clamping ring.

Specifications:

- 1 hp. Motor 3-phase 220 V. 60 Hz.
- Production rate is 600 bottles per hour.
- Pedal switch for activation.

Catalog #2019 - \$7,495.00



Bottle Rinsers

Manual Rinsers & Sparger for Bottles

Features:

- Rinsers with 2 water jets as bottle rinsers, water filter is included.
- Two jet spargers for gas, includes gas regulator and set up.
- Stainless steel frame on low stand for easy working height.

Catalog #3355 - \$2,795.00



Manual Gas Sparger for Bottles

Features:

- Sparger with four jet spargers for gas sparging of bottles, includes gas regulator and set up.
- Stainless steel frame on low stand for easy working height.

Catalog #3359 - \$2,395.00



Labeling Machines

Race Junior Manual Labeling Machine

Affordably priced with speed, accuracy and versatility for small run labeling operation.

Features:

- Roll diameter 8" maximum. Label height 5" maximum
- Accomodates bottle diameter 1/2" to 4.5", front and back labels on the same roll with use of gap guide
- Works with both left hand and right hand oriented labels. Will not work with magnums bottles

Catalog #3514 \$995.00



Race Razor Manual Labeling Machine

The Race Razor works with roll stock, fan-folded and flat stock labels.

The labels can also be fed right out of a printer making it ideal for short print runs.

Features:

- Bottle or container size 1 1/2" to 5". Web width 1" to 6"
- Roll diameter 8" maximum. Label orientation #4 left edge leading
- Capable of applying front and back labels alternating on the same roll
- As containers are labeled, the used substrate is wound onto the crank roller keeping your work area clean.
- Approximate labeling speed is 10-15 containers per minute.

Catalog #3513 \$1,150.00



Race Standard Manual Labeling Machine

Features:

- Works with any round container from 1" to 8" diameter
- Works with left hand or right hand oriented labels
- Handles label rolls up to 12" diameter and front and back labels on the same roll
- Easy adjustment to different size bottles. Light weight, portable and compact design

Catalog #3512 \$1,495.00



AP-362 Semi-Automatic Labeling Machine

The perfect semi-automatic labeling solution for cylindrical containers as well as many tapered containers, including bottles, cans, jars and tubes.

Set-up and operation is fast and easy.

1. Set the guides
2. Place your container in the machine
3. Press the foot switch to apply label

The built-in spring-loaded pressure arm makes sure labels are applied firmly and without wrinkles. Fast labeling, able to apply labels at speeds of up to 1200 per hour. Labels are perfectly applied without wrinkles, giving your finished products a highly professional look. It can apply one or two different labels to a single container. A built-in LED counter and memory for up to nine front-to-back label offsets is also included.



Specifications:

- Container Width: 1" to 9.4" (25.4mm to 238mm)
- Container Diameter: 0.6" to 6.7" (15mm to 170mm)
- Container Shape: Cylindrical and many tapered. Roll diameter: Up to 8" (203mm)
- Media liner width: 1" to 8" (25.4mm to 213mm). Roll core: 2" to 3" I.D. (51.8mm to 76.2mm)
- Dimensions: 13.4" W x 8.9" H x 12.9" D (340mmW x 226mmH x 328mmD)

Catalog #3515 \$1595.00



Popular glass cleaning machine in German bars and restaurants. Spulboy Neptune T2000 machine is designed for in-sink operation, cleaning tank holds cleaning solution and fitted with a round center cleaning brush to clean inside of glass and side brush to clean outside of glass. Equipped with water rinser to spray clean glasses with fresh water that is connected to tap. Ideal for bar and tasting room without a commercial dishwasher. Requires sink and plumbing set up.



Item	Catalog	Price
Spulboy Neptune T-2000 Machine	5960	\$195.00
SpÜlboy Glass Cleaning Tablets	5962	\$24.00
SpÜlboy Brush Soaking Powder	5963	\$20.00
Replacement Round Center Brush	5964	\$20.00
Replacement Square Side Brush	5968	\$35.00

Belgium Style Champagne Corks & Wire



New generation of agglomerated cork with great structural stability for low CO 2 level sparkling product.

- Cork length is 44 mm and diameter 25.5 mm.
- Catalog #0014 \$179.00 per bag of 1000 corks.

Champagne wire with cap, 1000 per bag.
Catalog #2315 \$195.00

Champagne Capsule Gold color, 1800 per box
Catalog #2308-1 \$195.00



© G.W. KENT, INC. March, 2012

© G.W. KENT, INC. March, 2012

Packaging Supplies

Crown Caps

Crown caps 26 mm, with oxygen-barrier liner. Packed in box of 10,000 caps. 6 case price break is based on same color, no mix & match.

Item	Catalog	Price / case	6 case or more
Crown Caps - Black Color	2304-1	\$139.00	\$120.00
Crown Caps - Red Color	2304-2	\$139.00	\$120.00
Crown Caps - Silver Color	2304-3	\$139.00	\$120.00
Crown Caps - White Color	2304-4	\$139.00	\$120.00
Crown Caps - Green Color	2304-5	\$139.00	\$120.00
Crown Caps - Yellow Color	2304-6	\$139.00	\$120.00
Crown Caps - Aqua Blue Color	2304-8	\$139.00	\$120.00
Crown Caps - Gold color	2304-9	\$139.00	\$120.00
Crown Caps - Orange Color	2304-11	\$139.00	\$120.00
Crown Caps - U.S. Flag	2304-12	\$139.00	\$120.00



Keg Caps

Plastic caps for covering beer keg neck. Case price of 2000 caps is based on same color, no mix or match.

Item	Catalog	Price / 100 caps	Case of 2000 caps (same color)
Yellow Keg Caps	5920-1	\$15.00	\$150.00
Blue Keg Cap	5920-2	\$15.00	\$150.00
White Keg Cap	5920-3	\$15.00	\$150.00
Clear Keg Cap	5920-4	\$15.00	\$150.00
Red Keg Cap	5920-5	\$15.00	\$150.00
Green Keg Cap	5920-6	\$15.00	\$150.00
Black Keg Cap	5920-7	\$15.00	\$150.00



Beer Bottles

Features:

- Long neck amber color beer bottle, pry-off crown cap finish.
- Capacity 12 oz., pack 24 bottle per case. Price is for 24 bottle / case.
- Sold in pallet quantity only (108 case).

Catalog #6250 Please check price online. www.BreweryParts.com2304-1

Beer Bottles Pressure Tester

Expansion stopper seal against bottle neck with pressure gauge for pressure indication in bar.

Catalog #2691 \$159.00



© G.W. KENT, INC. March, 2012

© G.W. KENT, INC. March, 2012



Item	Size	Material	Catalog	Price
Replacement Valve Seat	1"	Silicone	90-10A	\$7.50
Replacement Valve Seat	1.5"	Silicone	90-15A	\$7.50
Replacement Valve Seat	1.5"	EPDM	90-15B	\$7.50
Replacement Valve Seat	2"	Silicone	90-20A	\$9.50
Replacement Valve Seat	2"	EPDM	90-20B	\$9.50
Replacement Valve Seat	3"	Silicone	90-30A	\$14.00
Replacement Valve Seat	4"	Silicone	90-40A	\$20.00



Sanitary Valve

Butterfly Valves TC

Premium quality 304L stainless steel sanitary butterfly valve with 12 position locking handles. Handle is made of 304 stainless steel with beautiful mirror finish to match valve body. Handle will not break off like plastic type.

- Valve seat is silicone.
- Temperature range: 15° to 200° F.



304 stainless steel	Length	Pressure Rating	Flow Coefficient	Connection	Catalog	Price
1" TC Butterfly Valves	Body 3.5"	140 psi	23 CV	1" TC	90-10	\$79.00
1-1/2" TC Butterfly Valves	Body 3.5"	140 psi	80 CV	1-1/2" TC	90-15	\$85.00
2" TC Butterfly Valves	Body 3.75"	140 psi	230 CV	2" TC	90-20	\$95.00
2-1/2" TC Butterfly Valves	Body 3.81"	110 psi	260 CV	2-1/2" TC	90-25	\$110.00
3" TC Butterfly Valves	Body 4.12"	110 psi	370 CV	3" TC	90-30	\$145.00
4" TC Butterfly Valves	Body 4.81"	85 psi	800 CV	4" TC	90-40	\$250.00
Pneumatic Actuator Butterfly Valve 1-1/2"		140 psi	80 CV	1-1/2" TC	904-15	\$275.00
Pneumatic Actuator Butterfly Valve 2"		140 psi	230 CV	2" TC	904-20	\$345.00
Pneumatic Actuator Butterfly Valve 3"		110 psi	370 CV	3"	904-30	\$395.00

Econo Butterfly Valves TC

Our econo sanitary Butterfly Valves is made of 304L stainless steel 4 position pull out locking handles. Valve seat is made of silicone. Good quality at great saving. Replacement valve seal is available in stock

- Valve seat is silicone.
- Temperature range: 15° to 200° F.

Item	Length	Connection	Catalog	Price
Econo Butterfly Valve 1-1/2"	2-3/4"	1-1/2" TC	912-15	\$49.00
Econo Butterfly Valve 2"	3"	2" TC	912-20	\$55.00
Replacement Econo Valve Seat 1"			912-10A	\$7.50
Replacement Econo Valve Seat 1-1/2"			912-15A	\$7.50
Replacement Econo Valve Seat 2"			912-20A	\$9.50



Sanitary Diaphragm Valve TC

Diaphragm valve in 316 L. material, sanitary designed with complete drainage of fluid. It can be sanitized in line with steam (SIP or CIP) or autoclave. It also allows precise control of the fluid flow rate with low turbulence and minimal back pressure. Conforms to FDA standard, mirror polished surface prevents contamination and PFA diaphragm with support in EPDM.

316 stainless steel	Connection	Catalog	Price
Diaphragm Valve 3/4"	3/4" TC	905-34	\$145.00
Diaphragm Valve 1"	1" TC	905-10	\$175.00
Diaphragm Valve 1-1/2"	1-1/2" TC	905-15	\$195.00
Diaphragm Valve 2"	2" TC	905-20	\$245.00
Pneumatic Diaphragm Valve 1"	1" TC	9051-2	\$345.00
Pneumatic Diaphragm Valve 1-1/2"	1-1/2" TC	9051-3	\$375.00
Pneumatic Diaphragm Valve 2"	2"	9051-4	\$445.00



Encapsulated Ball Valves TC

Heavy duty sanitary ball valve full port with encapsulated teflon seats and tri-clamp connection. In-line designed for maximum flow capacity. Valves may be installed at any positions. Made of 316 stainless steel.

- Body and Ball: 316 L. stainless steel
- Seat Material: Teflon
- Finish: 32 Ra ID & OD

316 Stainless Steel	Catalog	Price
1" TC Encapsulated Ball Valve	982-10	\$79.00
1-1/2" TC Encapsulated Ball Valve	982-15	\$99.00
2" TC Encapsulated Ball Valve	982-20	\$139.00



Sanitary Ball Valves TC

304 Stainless steel sanitary ball valves with body that can be taken apart for easy cleaning and maintenance. Uniform bored diameter improves flow and eliminates pooling of potential contaminants. Handle is made of 304 stainless for long service life. Meets 3-A sanitary standards with mirror polish and stainless steel handle.

Item	Catalog	Price
1" TC Ball Valves	98-10	\$85.00
1-1/2" TC Ball Valves	98-15	\$120.00
2" TC Ball Valves	98-20	\$150.00
3" TC Ball Valves	98-30	\$399.00
4" TC Ball Valves	98-40	\$595.00



Sanitary 2-Way Ball Valves TC

304 Stainless steel sanitary ball valves with light compact body design for general processing needs.

304 stainless steel	Catalog	Price
1" TC Ball Valves	986-10	\$75.00
1-1/2" TC Ball Valves	986-15	\$95.00
2" TC Ball Valves	986-20	\$125.00



Sanitary 3-Way Ball Valves TC

304 Stainless steel sanitary ball valves with light compact body design for general processing needs.

304 stainless steel	Catalog	Price
1" TC Ball Valves	987-10	\$165.00
1-1/2" TC Ball Valves	987-15	\$225.00
2" TC Ball Valves	987-20	\$325.00



Check Valve TC

304L stainless steel sanitary check valve, spring type one-way valve. Sanitary mirror polish meets 3-A standards.

- Max. operating pressure: 140 psi
- Temperature Range: 15° to 200° F.

Item	Body Length	Catalog	Price
Check Valves 1" TC	4"	94-10	\$110.00
Check Valves 1-1/2" TC	4"	94-15	\$120.00
Check Valves 2" TC	4"	94-20	\$150.00

© G.W. KENT, INC. March, 2012

© G.W. KENT, INC. March, 2012



Sanitary Fittings

Adaptor NPT to TC

304 stainless steel, heavy wall, sanitary mirror polish and meets 3-A standards.



Male NPT Adaptor	Catalog	Price
1-1/2" TC x 1/4" NPT Male	84-31	\$19.00
1-1/2" TC x 1/2" NPT Male	84-08	\$19.00
1-1/2" TC x 3/8" NPT Male	84-10	\$19.00
1-1/2" TC x 3/4" NPT Male	84-04	\$25.00
1-1/2" TC x 1" NPT Male	84-02	\$25.00
1-1/2" TC x 1-1/4" NPT Male	84-33	\$25.00
1-1/2" TC x 1-1/2" NPT Male	84-06	\$25.00
2" TC x 1" NPT Male	84-16	\$30.00
2" TC x 1-1/2" NPT Male	84-14	\$30.00
2" TC x 2" NPT Male	84-12	\$30.00

Female NPT Adaptor	Catalog	Price
1-1/2" TC x 1/4" NPT Female	84-30	\$19.00
1-1/2" TC x 1/2" NPT Female	84-07	\$19.00
1-1/2" TC x 3/8" NPT Female	84-09	\$19.00
1-1/2" TC x 3/4" NPT Female	84-03	\$25.00
1-1/2" TC x 1" NPT Female	84-01	\$25.00
1-1/2" TC x 1-1/4" NPT Female	84-32	\$25.00
1-1/2" TC x 1-1/2" NPT Female	84-05	\$25.00
2" TC x 1" NPT Female	84-15	\$30.00
2" TC x 1-1/2" NPT Female	84-13	\$30.00
2" TC x 2" NPT Female	84-11	\$30.00

Tee TC

304 stainless steel, heavy wall, sanitary mirror polish and meets 3-A standards.



Item	Catalog	Price
1" Tee TC	7MP-10	\$38.00
1-1/2" Tee TC	7MP-15	\$45.00
Reducing Tee 2" x 1-1/2"	7MP-97	\$52.00
2" Tee TC	7MP-20	\$57.00
2-1/2" Tee TC	7MP-25	\$79.00
3" Tee TC	7MP-30	\$99.00
4" Tee TC	7MP-40	\$165.00

Instrument Tee TC

304 stainless steel, heavy wall, short body designed for mounting pressure gauge or control instrument. Sanitary mirror polish.

Item	Catalog	Price
1-1/2" Instrument Tee	7MP-99	\$39.00

© G.W. KENT, INC. March, 2012

Long Hose Adaptor

304 stainless steel, heavy wall with sanitary mirror polish.

Item	Length	Catalog	Price
1" Hose Barb x 1-1/2" TC	4 1/2"	82-10	\$20.00
1-1/2" Hose Barb x 1-1/2" TC	4 1/2"	82-15	\$20.00
1-1/2" Hose Barb x 2" TC	4 1/2"	82-15A	\$24.00
2" Hose Barb x 2" TC	4 1/2"	82-20	\$24.00
2-1/2" Hose Barb x 2-1/2" TC	4 1/2"	82-25	\$30.00
3" Hose Barb x 3" TC	4 1/2"	82-30	\$45.00
4" Hose Barb x 4" TC	4 1/2"	82-40	\$56.00
6" Hose Barb x 6" TC	4 1/2"	82-60	\$120.00



Small Diameter Hose Adaptor

304 stainless steel for flexible hose.

Item	Length	Catalog	Price
1/4" Hose Barb x 1-1/2" TC	2 1/4"	82-03	\$19.00
3/8" Hose Barb x 1-1/2" TC	2 1/4"	82-01	\$19.00
1/2" Hose Barb x 1-1/2" TC	2 1/4"	82-02	\$19.00
3/4" Hose Barb x 1-1/2" TC	2 1/4"	82-04	\$19.00



Short Hose Adaptor

304 stainless steel with sanitary mirror polish. Short length barb can be used with flexible vinyl hose, not recommended for suction type hose or heavy wall hose.

Item	Length	Catalog	Price
1" Hose Barb x 1-1/2" TC	1 5/8"	823-10	\$10.00
1-1/2" Hose Barb x 1-1/2" TC	1 5/8"	823-15	\$12.00
2" Hose Barb x 2" TC	1 5/8"	823-20	\$17.00



Clamp

Premium quality with beautiful mirror polish in 304L stainless steel. Large heavy duty wing nut, easy to clamp on and tighten. Single hinge pin.

Item	Catalog	Price
Mini 1/2" & 3/4" TC	13MHM-12	\$7.50
1-1/2" TC	13MHM-15	\$7.50
2" TC	13MHM-20	\$8.75
2-1/2" TC	13MHM-25	\$12.00
3" TC	13MHM-30	\$13.50
4" TC	13MHM-40	\$16.00
6" TC	13MHM-60	\$35.00



High Pressure Clamp

Item	Catalog	Price
3/4" Hi Pressure Clamp	1355-1	\$9.50
1-1/2" Hi Pressure Clamp	1355-2	\$14.50
2" Hi Pressure Clamp	1355-3	\$19.50
3" Hi Pressure Clamp	1355-4	\$24.50



Sight Glass TC

304 Stainless steel meets 3-A standards.. Glass is Pyrex Glass. Temperature up to 200° F.

Item	Total L.	Glass L.	Max. Pressure	Connection	Catalog	Price
1" TC Sight Glass	5.75"	2.5"	140 psi	1" TC	92-10	\$75.00
1-1/2" TC Sight Glass	5.75"	2.5"	140 psi	1-1/2" TC	92-15	\$78.00
2" TC Sight Glass	5.75"	2.5"	140 psi	2" TC	92-2	\$96.00
2-1/2" TC Sight Glass	7.25"	2.5"	120 psi	2-1/2" TC	92-25	\$115.00
3" TC Sight Glass	7.25"	2.5"	120 psi	3" TC	92-30	\$150.00
4" TC Sight Glass	7.25"	2.5"	90 psi	4" TC	92-40	\$185.00



Vista Sight Glass TC

304 Stainless steel meets 3-A standards. Glass is Pyrex Glass. Temperature up to 200° F.

Item	Total Length	Glass Length	Connection	Catalog	Price
1" TC Vista Sight Glass	5.5"	3.35"	1" TC	923-10	\$75.00
1-1/2" TC Vista Sight Glass	5.5"	3.35"	1-1/2" TC	923-15	\$78.00
2" TC Vista Sight Glass	5.5"	3.35"	2" TC	923-20	\$96.00



Sight Glass with Protector TC

304 Stainless steel. Glass is protected with a stainless steel cover. Glass length is 3.9".

Glass is Pyrex Glass. Temperature up to 200° F.

Item	Length	Connection	Catalog	Price
1" TC Sight Glass with protector	6.14"	1" TC	924-10	\$75.00
1-1/2" TC Sight Glass with protector	6.3"	1-1/2" TC	924-15	\$78.00
2" TC Sight Glass with protector	6.5"	2" TC	924-20	\$96.00



Tank Top Mount Sight Glass with Light TC

304 Stainless steel. Designed to be mounted on top cover of vessels or tank for product inspection and monitoring. Light is battery operated, no special wiring required. Glass is Pyrex Glass. Temperature up to 200° F.

Item	Connection	Catalog	Price
3" Sight Glass with Light	3" TC	926-30	\$175.00
4" Sight Glass with Light	4" TC	926-40	\$245.00



Processing View Sight Glass TC

304 Stainless steel. Designed for vessel, tank and processing pipe mounting. Glass is Pyrex Glass. Temperature up to 200° F.

Item	Connection	Catalog	Price
1-1/2" Processing View Sight Glass	1-1/2" TC	925-15	\$59.00
2" Processing View Sight Glass	2" TC	925-20	\$69.00
3" Processing View Sight Glass	3" TC	925-30	\$95.00
4" Processing View Sight Glass	4" TC	925-40	\$125.00



Elbow TC

Heavy wall constructed sanitary elbow, mirror polished in 304L stainless steel.

Item	Catalog	Price
1" TC 90° Elbow	2CMP-10	\$25.00
1-1/2" TC 90° Elbow	2CMP-15	\$25.00
2" TC 90° Elbow	2CMP-20	\$34.00
2-1/2" TC 90° Elbow	2CMP-25	\$59.00
3" TC 90° Elbow	2CMP-30	\$75.00
4" TC 90° Elbow	2CMP-40	\$120.00



Item	Catalog	Price
Reducing Elbow 2" TC x 1-1/2" TC	2CMP-31MP	\$29.00
90° Elbow 1" TC x Butt-weld	2CMP-95	\$21.00
90° Elbow 1.5" TC x Butt-weld	2CMP-96	\$22.00
90° Elbow 2" TC x Butt-weld	2CMP-97	\$27.00

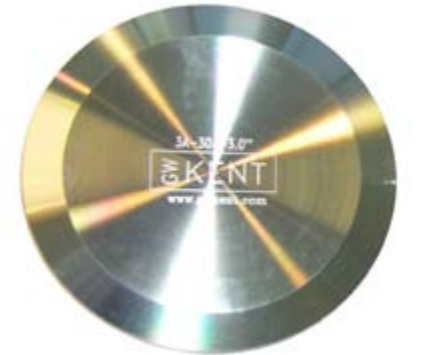


Item	Catalog	Price
1" TC 45° Elbow	2KMP-10	\$37.00
1-1/2" TC 45° Elbow	2KMP-15	\$40.00
2" TC 45° Elbow	2KMP-20	\$45.00

Solid End Caps

A blind cap used to seal the end of tube or valves with TC ferrules. A clamp gasket and a clamp are needed for connection. 304 stainless steel.

Item	Catalog	Price
1-1/2" Solid End Cap	16AMP-15	\$3.75
2" Solid End Cap	16AMP-20	\$4.75
2-1/2" Solid End Cap	16AMP-25	\$7.50
3" Solid End Cap	16AMP-30	\$9.00
4" Solid End Cap	16AMP-40	\$18.00
6" Solid End Cap	16AMP-60	\$48.00



Y TC

304 stainless steel, heavy wall, sanitary mirror polish

Item	Catalog	Price
1-1/2" Y Straight	797-15	\$69.00
2" Y Straight	797-20	\$79.00
3" Y Straight	797-30	\$125.00
1-1/2" Y Curved	798-15	\$79.00
2" Y Curved	798-20	\$79.00



© G.W. KENT, INC. March, 2012

© G.W. KENT, INC. March, 2012

TC Ferrules

For TC connection welding to pipe available in long weld and short weld. 304 stainless steel mirror polish, meets 3-A sanitary standards.



Long Weld Ferrule	Catalog	Price
1" Ferrule	14AM7-10	\$6.75
1-1/2" Ferrule	14AM7-15	\$6.75
2" Ferrule	14AM7-20	\$7.75
2-1/2" Ferrule	14AM7-25	\$10.75
3" Ferrule	14AM7-30	\$14.75
4" Ferrule	14AM7-40	\$19.75
6" Ferrule	14AM7-60	\$25.75

Short Weld Ferrule	Catalog	Price
1" Ferrule	14WMP-10	\$4.75
1-1/2" Ferrule	14WMP-15	\$4.75
2" Ferrule	14WMP-20	\$5.75
2-1/2" Ferrule	14WMP-25	\$6.75

Tank Ferrules, Heavy Wall

316 stainless steel	Length	Tube ID	Tube OD	Catalog	Price
1/2" Tank Ferrule	1.62"	0.32"	0.52"	14MPW-01	\$9.50
3/4" Tank Ferrule	1.62"	0.57"	0.75"	14MPW-02	\$9.50
1" Tank Ferrule	1.62"	0.87"	1.00"	14MPW-03	\$9.50
1-1/2" Tank Ferrule	1.62"	1.37"	1.50"	14MPW-04	\$12.50
2" Tank Ferrule	1.75"	1.87"	2.00"	14MPW-05	\$16.50
2-1/2" Tank Ferrule	1.75"	2.37"	2.50"	14MPW-06	\$19.50
3" Tank Ferrule	1.81"	2.87"	3.00"	14MPW-07	\$26.50

Cross TC

304 stainless steel, heavy wall, sanitary mirror polish.

Item	Catalog	Price
1" Cross TC	83-10	\$54.00
1-1/2" Cross TC	83-15	\$56.00
2" Cross TC	83-20	\$92.00
2-1/2" Cross TC	83-25	\$120.00
3" Cross TC	83-30	\$175.00
4" Cross TC	83-40	\$250.00



© G.W. KENT, INC. March, 2012

© G.W. KENT, INC. March, 2012

End Cap Reducer

304 stainless steel, sanitary mirror polish.

Item	Catalog	Price
2" x 1-1/2" End Cap Reducer	3116-1	\$24.00
3" x 1-1/2" End Cap Reducer	3116-2	\$29.00
3" x 2" End Cap Reducer	3116-4	\$29.00
4" x 1-1/2" End Cap Reducer	3116-3	\$39.00
4" x 2" End Cap Reducer	3116-5	\$39.00

Beer Nut

Beer Nut with 1-1/2" TC

For connecting serving tank to beer line. Tail piece is not included. Catalog #85-05 - \$19.00

Beer hex Nut with bent tail and washer

Draft dispensing line use, for connecting to beer nut (#85-05) and draft beer line. Part includes hex nut, 90 degree bent tail in 3/8" OD and washer. Beer nut is not included. Catalog #85-05A - \$6.95



Reducer

Reducer - Concentric TC

304 stainless steel, heavy wall, sanitary mirror polish.

Item	Catalog	Price
1" x 1-1/2" Reducer Concentric TC	31-14AMP1	\$35.00
1" x 2" Reducer Concentric TC	31-14AMP2	\$39.00
1-1/2" x 2" Reducer Concentric TC	31-14AMP3	\$39.00
1-1/2" x 3" Reducer Concentric TC	31-14AMP4	\$125.00
2" x 3" Reducer Concentric TC	31-14AMP5	\$60.00
2-1/2" x 1-1/2" Reducer Concentric TC	31-14AMP7	\$70.00
2-1/2" x 3" Reducer Concentric TC	31-14AMP9	\$70.00
4" x 2" Reducer Concentric TC	31-14AMP10	\$90.00
4" x 3" Reducer Concentric TC	31-14AMP6	\$140.00



Reducer - Eccentric TC

304 stainless steel, heavy wall, sanitary mirror polish.

Item	Catalog	Price
1" x 2" Eccentric Reducer	32W-10	\$39.00
1-1/2" x 3" Eccentric Reducer	32W-15	\$125.00
1-1/2" x 2" Eccentric Reducer	32W-20	\$45.00
2-1/2" x 1-1/2" Eccentric Reducer	32W-25	\$70.00
2-1/2" x 2" Eccentric Reducer	32W-25A	\$70.00
2" x 3" Eccentric Reducer	32W-30	\$60.00
4" x 2" Eccentric Reducer	32W-40	\$90.00



CIP Spray Balls

Rotating Spray Ball

A sanitary low flow cleaning spray head that is more efficient than traditional static spray balls. Rotating spray ball uses low volumes of water at low pressure, can be used in tanks up to 3000 gallon. Working principle is the flow of the cleaning liquid causes the head to rotate with fan jets laying out a swirling pattern throughout the tank. Rotating spray liquid generates a vibrating impact and cascading flow that efficiently cleans the inside wall of tank.

Technical data:

- Working Pressure: 14 - 44 psi (1 - 3 bar)
- Spray pattern: 360°
- Recommended Pressure: 30 psi (2 bar)
- Max. working temperature: 200° F (95° C)
- Wetting coverage: 10 ft. (impact coverage 4 ft.)
- Lubricant: Self-lubricating with fluid

Item	Material	Connection	Catalog	Price
CIP Rotating Spray Ball	304 S.S.	3/4" female NPT	80-94	\$125.00
CIP Rotating Spray Ball	304 S.S.	1" Pin-end	80-95	\$125.00
316 L. CIP Rotating Spray Ball	316 L S.S.	1" Pin-end	80-95P	\$145.00
CIP Rotating Spray Ball	304 S.S.	1-1/2" Pin-end	80-95B	\$125.00
CIP Rotating Spray Ball	304 S.S.	1-1/2" TC	80-96	\$125.00



Static Spray Ball

Sanitary static spray ball with 360° coverage, made of 304 stainless steel.

Technical data:

- Working Pressure: 14 - 44 psi (1 - 3 bar)
- Spray pattern: 360°
- Recommended Flow rate: 25 gpm @25 psi.
- Max. working temperature: 200° F (95° C)
- Wetting coverage: 6 ft.

304 stainless steel	Connection	Catalog	Price
Static Spray Ball	1-1/2" TC	80-97	\$39.00
Static Spray Ball	1" Pin-End	80-98	\$39.00
Static Spray Ball	1.5" Pin-End	80-98A	\$39.00
Static Spray Ball	3/4" FNPT	80-99	\$39.00
Static Spray Ball	1" FNPT	80-991	\$39.00
Static Spray Ball	1.5" FNPT	80-992	\$39.00
Static Spray Ball	1" butt-weld	80-993	\$39.00
Static Spray Ball	1.5" butt-weld	80-994	\$39.00



Static Spray Ball with Supply pipe & 2" TC Tank Adaptor

An inexpensive CIP set up, using an existing 2" ferrule on top of tank for vent, sanitary designed & construction. Drop in set up of spray ball with liquid supply pipe welded with fitting in 2" TC.

Technical data:

- Tank Mount: 2" TC ferrule on exterior of tank dish head
- Working Pressure: 14 - 44 psi (1 - 3 bar)
- Spray pattern: 360°
- Recommended Flow rate: 25 gpm @25 psi.
- Max. working temperature: 200° F (95° C)
- Wetting coverage: 6 ft.

Catalog #80-99A - \$89.00



Miniature Bottle Spray Nozzles

Unique extremely small for bottles neck opening, Made of 316 stainless Steel.

- 300 degree spray down pattern.
- Length 1.1" by width 0.44" (11 mm).
- Made of 316L stainless steel with slide bearing.
- Maximum spray diameter 3 ft.
- Maximum temperature 375 F.
- Operating pressure 20 - 60 psi, flow rate 2 - 3 gpm.
- Maximum operating pressure 70 psi.
- Connection is 1/8" male NPT.



CIP Stainless Steel Mini Whirling Spray Nozzles

Made of 316L stainless steel with coverage of 3 to 5 ft. in diameter at 360 degrees. Tolerates a wide range of cleaners and solvents.

- Connection is 3/8" NPT male, nozzle can spin with pressure as low as 5 psi.
- Operating pressure 20 - 60 psi, flow rate 2 - 4 gpm.
- Maximum pressure 70 psi and maximum temperature 250 F.
- Nozzle length 2" by width 0.79" (20 mm).



PVDF Mini Whirling Spray Nozzles

Made of precision molded PVDF with coverage of 3 to 5 ft. in diameter at 360 degrees. Tolerates a wide range of cleaners and solvents.

- Connection is 1/2" NPT female, nozzle can spin with pressure as low as 5 psi.
- Operating pressure 20 - 60 psi, flow rate 2 - 4 gpm.
- Maximum pressure 70 psi and maximum temperature 190 F.
- Nozzle length 3" by width 1.18".

Item	Connection	Coverage	Pressure	Catalog	Price
Miniature Bottle Spray Nozzles	1/8" NPT M	3 ft.	20 - 60 psi	80-89	\$179.00
CIP Stainless Steel Mini Whirling Spray Nozzles	3/8" NPTM	3 - 5 ft.	20 - 60 psi	80-90	\$179.00
PVDF Mini Whirling Spray Nozzles	1/2" NPTF	3 - 5 ft.	0 - 60 psi	80-91	\$69.00

© G.W. KENT, INC. March, 2012

© G.W. KENT, INC. March, 2012

Clamp Gasket

Our sanitary Buna gasket meets 3-A and USDA sanitary standard, buna material is not recommended for strong acids and ozone.

Buna Black Gasket

Item	Catalog	Price
1" Buna Black Clamp Gasket	40MPU-10	\$0.75
1-1/2" Buna Black Clamp Gasket	40MPU-15	\$0.50
2" Buna Black Clamp Gasket	40MPU-20	\$0.50
2-1/2" Buna Black Clamp Gasket	40MPU-25	\$0.75
3" Buna Black Clamp Gasket	40MPU-30	\$0.75
4" Buna Black Clamp Gasket	40MPU-40	\$1.25
6" Buna Black Clamp Gasket	40MPU-60	\$8.00



Buna White Gasket

Item	Catalog	Price
1" Buna White Clamp Gasket	40MPUW-10	\$0.75
1-1/2" Buna White Clamp Gasket	40MPUW-15	\$0.50
2" Buna White Clamp Gasket	40MPUW-20	\$0.50
3" Buna White Clamp Gasket	40MPUW-30	\$0.75

Flange Buna Black Gasket

Item	Catalog	Price
1" Flange Buna Black Clamp Gasket	40MPFU-10	\$1.50
1-1/2" Flange Buna Black Clamp Gasket	40MPFU-15	\$1.50
2" Flange Buna Black Clamp Gasket	40MPFU-20	\$1.50
3" Flange Buna Black Clamp Gasket	40MPFU-30	\$2.50

Viton Gasket

Provides high acid, steam & heat resistance. Meet 21CFR 177.2600. Passed U.S.P. Class VI Cytotoxicity testing. Temperature range -20° F to 410° F.

Item	Catalog	Price
1/2" Viton Clamp Gasket	40MPSFY-12	\$2.00
3/4" Viton Clamp Gasket	40MPSFY-34	\$2.00
1" Viton Clamp Gasket	40MPSFY-10	\$2.00
1-1/2" Viton Clamp Gasket	40MPSFY-15	\$2.00
2" Viton Clamp Gasket	40MPSFY-20	\$2.00
3" Viton Clamp Gasket	40MPSFY-30	\$3.50
4" Viton Clamp Gasket	40MPSFY-40	\$4.50

Gasket Material Reference

Performance Properties					
Property	Buna-N	Silicone	Teflon	EPDM	Viton
Tensile Strength	Fair-Good	Good	Excellent	Good-Excellent	Good-Excellent
Electrical Properties	Poor	Excellent	Excellent	Excellent	Good
Weather Resistance	Good	Excellent	Excellent	Excellent	Good
Ozone Resistance	Fair	Excellent	Excellent	Excellent	Excellent
Heat Resistance	225 F	450 F	450 F	275 F	400 F
Cold Resistance	-40 F	-80 F	-110 F	-55 F	-20 F
Steam Resistance	Good	Good	Excellent	Good-Excellent	Good
Tear Resistance	Good	Excellent	Excellent	Good	Fair
Acid Resistance	Good	Good	Excellent	Good-Excellent	Good

Silicone Gasket

High purity silicone hygienic seals are the ideal choice for use in production facilities of pharmaceutical, biotechnology, food, beverage and high-purity water. Our silicone seals withstand temperature extremes, moisture and steam. Seal with smooth finish resists product adhesion. These odorless, tasteless, non-toxic hygienic seals maintain product integrity and can be autoclaved and gas sterilized. Meets U.S. pharmacopeia class VI, ASME-BSP, USDA and 3-A standard.

Item	Catalog	Price
1/2" Silicone Clamp Gasket	40MPX-12	\$1.50
3/4" Silicone Clamp Gasket	40MPX-34	\$1.50
1" Silicone Clamp Gasket	40MPX-10	\$1.50
1-1/2" Silicone Clamp Gasket	40MPX-15	\$1.50
2" Silicone Clamp Gasket	40MPX-20	\$1.50
3" Silicone Clamp Gasket	40MPX-30	\$2.50
4" Silicone Clamp Gasket	40MPX-40	\$3.00

EPDM Black Gasket

Due to temperature limitations, not recommended for continuous use in steam-in-place procedures.

Item	Catalog	Price
1" EPDM Black Clamp Gasket	40MPE-10	\$1.50
1-1/2" EPDM Black Clamp Gasket	40MPE-15	\$1.50
2" EPDM Black Clamp Gasket	40MPE-20	\$1.50
3" EPDM Black Clamp Gasket	40MPE-30	\$2.50
4" EPDM Black Clamp Gasket	40MPE-40	\$3.00

Teflon (PTFE) Gasket

Teflon is the material of choice whenever low temperature flexibility or gasket memory is not required. Teflon is not recommended where large temperature variations occur frequently, leakage can occur. Teflon has almost no extractables, has a low absorption rate and excellent resistance to process fluids. It can remain in service for longer periods of time in both water and steam for continuous use.

Item	Catalog	Price
1/2" Teflon Clamp Gasket	40MPG-12	\$1.50
3/4" Teflon Clamp Gasket	40MPG-34	\$1.50
1" Teflon Clamp Gasket	40MPG-10	\$1.50
1-1/2" Teflon Clamp Gasket	40MPG-15	\$1.50
2" Teflon Clamp Gasket	40MPG-20	\$1.50
3" Teflon Clamp Gasket	40MPG-30	\$2.50
4" Teflon Clamp Gasket	40MPG-40	\$3.00

Tuf-Steel Gasket

Unique 50/50 blend of non-pigmented PTFE and 316 L. water atomized and passivated stainless steel. A tough gasket as steam in place hygienic seal, excellent chemical resistance. Tuf-Steel gasket eliminates maintenance needs and helps prevent system downtime by eliminating cold flow creep. Ideal for steam pipe connections in both extreme cold (-100 degree F.) and hot conditions (up to 500 degree F.). Metal detectable. Meets USDA, 3-A sanitary standard, pharmacopeia class VI and ASME-BPE standard.



Item	Catalog	Price
1-1/2" Tuf-Steel Clamp Gasket	40MPGTS-15	\$3.95
2" Tuf-Steel Clamp Gasket	40MPGTS-20	\$5.95
3" Tuf-Steel Clamp Gasket	40MPGTS-30	\$7.95

Perforated Gasket

Item	Catalog	Price
1" Perforated Clamp Gasket	40MPUP-10	\$20.00
1-1/2" Perforated Clamp Gasket	40MPUP-15	\$20.00
2" Perforated Clamp Gasket	40MPUP-20	\$24.00
2-1/2" Perforated Clamp Gasket	40MPUP-25	\$34.00
3" Perforated Clamp Gasket	40MPUP-30	\$36.00

Diffuser Aeration Gasket

Sanitary diffuser gaskets provide increased oxygen content and can also be used to diffuse digester gases such as hydrogen sulfide and sulphur dioxide. To introduce ozone for oxidizing and destroying bacterial and organic chemical contaminants and for carbon dioxide injection for recarbonization and pH adjustment. 316 stainless steel 2 micron porous disc molded with EPDM gasket. Requires 2 psi push gas. Meets 3-A, USDA, ASME-BPE, and pharmacopeia Class VI standard.



Item	Catalog	Price
1-1/2" Diffuser Aeration Gasket	40MPD-15	\$125.00
2" Diffuser Aeration Gasket	40MPD-20	\$145.00

Screen Gasket

Screen gasket are used in processing pipeline systems for beverage industries. Screen are made of 316 stainless steel for straining small amount of particles during liquid transfer. Gasket material are made from FDA compliant EPDM material. Available in 10 mesh, 50 mesh and 100 mesh.



Item	Screen Mesh	Catalog	Price
1-1/2" Screen Clamp Gasket 10 mesh	10 mesh	40MPUS-15	\$24.00
1-1/2" Screen Gasket 50 Mesh	50 mesh	40MPUS-15M	\$29.00
1-1/2" Screen Gasket 100 Mesh	100 mesh	40MPUS-15F	\$29.00
2" Screen Clamp Gasket 10 mesh	10 mesh	40MPUS-20	\$29.00
2" Screen Gasket 50 Mesh	50 mesh	40MPUS-20M	\$32.00
2" Screen Gasket 100 Mesh	100 mesh	40MPUS-20F	\$32.00
2-1/2" Screen Clamp Gasket 10 mesh	10 mesh	40MPUS-25	\$34.00
3" Screen Clamp Gasket 10 mesh	10 mesh	40MPUS-30	\$36.00

Sock Screen Gasket

316 stainless steel 16 mesh screen. All material meets FDA, 3-A sanitary standard. Coverage of 300% more area than conventional screen gasket. Decrease pump wear and energy consumption, smoother operation. Available in short sock cren (3/4" length) or long sock screen (6" length).

Item	Style	Catalog	Price
1-1/2" Screen Gasket	Long Sock	1107-15L	\$46.50
2" Screen Gasket	Long Sock	1107-20L	\$49.50
1-1/2" Screen Gasket	Short Sock	1107-15S	\$46.50
2" Screen Gasket	Short Sock	1107-20S	\$49.50



NPT Check Valve & Strainer

NPT Check Valve

304 stainless steel spring check valve with female NPT connection for liquid or gas application.



Item	Catalog	Price
1/4" Check Valve NPTF	103-14	\$24.00
1/2" Check Valves NPTF	103-12	\$24.00
3/4" Check Valves NPTF	103-34	\$27.00
1" Check Valves NPTF	103-10	\$35.00

NPT In-line Y Strainer

304 stainless steel Y type strainer for in-line liquid application, like glycol return line to strain out particles to protect pump.



Item	Catalog	Price
3/4" Y strainer NPTF	104-34	\$25.00
1" Y strainer NPTF	104-10	\$30.00
1-1/4" Y strainer NPTF	104-114	\$39.00
1-1/2" Y strainer NPTF	104-15	\$45.00

© G.W. KENT, INC. March, 2012

How to determine Tri-clamp size??

Tri Clamp	Ferrule OD
1"	= 1.984"
1-1/2"	= 1.984"
2"	= 2.516"
2-1/2"	= 3.047"
3"	= 3.579"
4"	= 4.682"



1" Tri-Clamp



1-1/2" Tri-Clamp



2" Tri-Clamp

How to determine national pipe size??

OD Fraction Inch (for quick reference only)	Pipe Thread Size
5/16	1/16
13/32	1/8
35/64	1/4
43/64	3/8
27/32	1/2
1-3/64	3/4
1-5/16	1
1-21/32	1-1/4
1-29/32	1-1/2
2-3/8	2
2-7/8	2-1/2
3-1/2	3
4	3-1/2
4-1/2	4

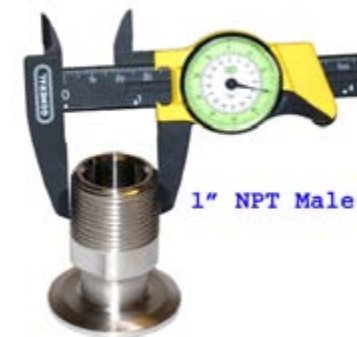
Pipe sizes do not refer to any physical dimensions. The outside diameter of each pipe or fitting must be measured and compared to the table for size identification. For example, a 3/4" NPT pipe thread has an outside diameter of 1.050 inches.



1" NPT Female



3/4" NPT Female



1" NPT Male



3/4" NPT Male

© G.W. KENT, INC. March, 2012

Stainless Steel NPT Pipe Fittings

NPT Hose Nipples

Item	Catalog	Price
1/4" Hose Nipple NPT	109-14	\$5.95
3/8" Hose Nipple NPT	109-38	\$5.95
1/2" Hose Nipple NPT	109-12	\$6.95
3/4" Hose Nipple NPT	109-34	\$7.95
1" Hose Nipple NPT	109-10	\$6.95
1-1/4" Hose Nipple NPT	109-114	\$12.95
1-1/2" Hose Nipple NPT	109-15	\$16.95
2" Hose Nipple NPT	109-20	\$19.95



NPT Tee

Item	Catalog	Price
1/2" Tee NPT	107-12	\$5.95
3/4" Tee NPT	107-34	\$7.95
1" Tee NPT	107-10	\$9.95
1-1/2" Tee NPT	107-15	\$14.95
2" Tee NPT	107-20	\$24.95



NPT Elbows

90 degree elbow both end are female NPT. Street elbow one end is male NPT and another end is female NPT.

Item	Catalog	Price
1/2" NPT 90° Elbow	105-12	\$5.95
3/4" NPT 90° Elbow	105-34	\$5.95
1" NPT 90° Elbow	105-10	\$9.95
1-1/2" NPT 90° Elbow	105-15	\$14.95
2" NPT 90° Elbow	105-20	\$24.95
1/2" Street Elbow NPT	106-12	\$5.95
3/4" Street Elbow NPT	106-34	\$6.95
1" Street Elbow NPT	106-10	\$9.95
1-1/2" Street Elbow NPT	106-15	\$14.95
2" Street Elbow NPT	106-20	\$24.95



NPT Hexagon Nut

Item	Catalog	Price
1/2" NPT Hexagon Nut	119-12	\$3.99
3/4" NPT Hexagon Nut	119-34	\$3.99
1" NPT Hexagon Nut	119-10	\$4.99
1-1/2" NPT Hexagon Nut	119-15	\$6.99

NPT Ball Valve

Stainless steel ball valve with female NPT connection for general liquid or gas application.



Item	Catalog	Price
1/4" Ball Valve NPTF	98-14	\$19.00
1/2" Ball Valves NPTF	98-12	\$24.00
3/8" Ball Valves NPTF	98-38	\$24.00
3/4" Ball Valves NPTF	98-34	\$27.00
1" Ball Valves NPTF	98-05	\$39.00
1-1/2" Ball Valves NPTF	98-06	\$59.00
2" Ball Valves NPTF	98-07	\$79.00

NPT Reducing Nipples

Item	Catalog	Price
3/8" x 1/4" Reducing Nipple NPT	111-01	\$6.95
1/2" x 1/4" Reducing Nipple NPT	111-02	\$6.95
1/2" x 3/8" Reducing Nipple NPT	111-03	\$6.95
3/4" x 1/4" Reducing Nipple NPT	111-04	\$9.95
3/4" x 3/8" Reducing Nipple NPT	111-05	\$9.95
3/4" x 1/2" Reducing Nipple NPT	111-06	\$9.95
1" x 1/4" Reducing Nipple NPT	111-07	\$12.95
1" x 3/8" Reducing Nipple NPT	111-08	\$12.95
1" x 1/2" Reducing Nipple NPT	111-09	\$12.95
1" x 3/4" Reducing Nipple NPT	111-10	\$12.95
1-1/2" x 3/8" Reducing Nipple NPT	111-11	\$12.95
1-1/2" x 1/2" Reducing Nipple NPT	111-12	\$12.95
1-1/2" x 3/4" Reducing Nipple NPT	111-13	\$12.95
1-1/2" x 1" Reducing Nipple NPT	111-14	\$12.95
2" x 1" Reducing Nipple NPT	111-15	\$15.95
2" x 1-1/2" Reducing Nipple NPT	111-16	\$24.95
3" x 2" Reducing Nipple NPT	111-17	\$32.95

NPT Hexagon Plugs

Item	Catalog	Price
3/4" Hexagon Plugs	115-34	\$6.95
1/2" Hexagon Plugs	115-12	\$6.95
1" Hexagon Plugs	115-10	\$6.95
1-1/2" Hexagon Plugs	115-15	\$8.95
2" Hexagon Plugs	115-20	\$12.95
3" Hexagon Plugs	115-30	\$19.95



NPT Hexagon Bushing

Item	Catalog	Price
3/8" x 1/4" Hexagon Bushing	113-01	\$6.95
1/2" x 1/4" Hexagon Bushing	113-02	\$6.95
1/2" x 3/8" Hexagon Bushing	113-03	\$6.95
3/4" x 1/4" Hexagon Bushing	113-04	\$6.95
3/4" x 3/8" Hexagon Bushing	113-05	\$6.95
3/4" x 1/2" Hexagon Bushing	113-06	\$6.95
1" x 1/4" Hexagon Bushing	113-07	\$8.95
1" x 3/8" Hexagon Bushing	113-08	\$8.95
1" x 1/2" Hexagon Bushing	113-09	\$8.95
1" x 3/4" Hexagon Bushing	113-10	\$8.95
1-1/2" x 1/2" Hexagon Bushing	113-11	\$12.95
1-1/2" x 3/4" Hexagon Bushing	113-12	\$12.95
1-1/2" x 1" Hexagon Bushing	113-13	\$12.95
2" x 1-1/2" Hexagon Bushing	113-14	\$14.95
3" x 2" Hexagon Bushing	113-15	\$19.95



NPT Hexagon Caps

Item	Catalog	Price
3/4" Hexagon Caps	114-34	\$6.95
1" Hexagon Caps	114-10	\$6.95
1-1/2" Hexagon Caps	114-15	\$10.95
2" Hexagon Caps	114-20	\$12.95



NPT Hexagon Nipples

Item	Catalog	Price
1/4" Hexagon Nipple	110-14	\$6.95
3/8" Hexagon Nipple	110-38	\$6.95
1/2" Hexagon Nipple	110-12	\$6.95
3/4" Hexagon Nipple	110-34	\$6.95
1" Hexagon Nipple NPT	110-10	\$9.95
1-1/4" Hexagon Nipple	110-114	\$12.95
1-1/2" Hexagon Nipple	110-15	\$14.95
2" Hexagon Nipple	110-20	\$19.95



NPT Barrel Nipples

Item	Catalog	Price
3/4" Barrel Nipple	118-34	\$9.95
1" Barrel Nipple	118-10	\$12.95
1-1/2" Barrel Nipple	118-15	\$16.95
2" Barrel Nipple	118-20	\$19.95



NPT Welding Nipple

Item	Catalog	Price
1/4" Welding Nipple NPT	112-14	\$6.95
1/2" Welding Nipple NPT	112-12	\$6.95
3/4" Welding Nipple NPT	112-34	\$6.95
1" Welding Nipple NPT	112-10	\$6.95
1-1/2" Welding Nipple NPT	112-15	\$8.95
2" Welding Nipple NPT	112-20	\$9.95



NPT Coupling

Item	Catalog	Price
1/2" NPT Coupling	101-12	\$4.95
3/4" NPT Coupling	101-34	\$4.95
1" NPT Coupling	101-10	\$6.95
1/2" NPT Half Coupling	102-12	\$4.95
3/4" NPT Half Coupling	102-34	\$4.95
1" NPT Half Coupling	102-10	\$4.95



Globe Valve & Gate Valve

Item	Catalog	Price
1" NPT Gate Valve	991-10	\$65.00
1-1/2" NPT Gate Valve	991-15	\$125.00
1" NPT Globe Valve	992-10	\$65.00
1-1/2" Globe Valve	992-15	\$125.00



© G.W. KENT, INC. March, 2012

© G.W. KENT, INC. March, 2012

Sample Valve

Sample Valve 1-1/2" TC

Will mount to a 1-1/2" TC ferrule on tank, made of 304 stainless steel with long body. Sanitary design and construction, easy to clean.

Catalog #80-10 - \$45.00



Perlick Style Sample Valve 1-1/2" TC

Compact and sanitary design sample valve in 316 stainless steel with 1-1/2" TC connection. Special hook design for carbonated beverage attachment for sampling.

Catalog #80-12 - \$99.00



Perlick Style Sample Valve 3/8" NPT

Compact and sanitary design sample valve in 316 stainless steel with 3/8" male NPT connection. Special hook design for carbonated beverage attachment for sampling.

Catalog #80-124 - \$99.00



Perlick Style Swivel Sample Valve 3/8" NPT

Compact and sanitary design sample valve in 304 stainless steel with swivel nut in 3/8" male NPT connection. The Swivel nut allows adjustment of nozzle position.

Catalog #80-125 \$99.00



Oak Barrel Sample Valve

For installation to oak barrel or cask. A 5/8" hole needs to be drilled on barrel for sample valve to be threaded into wood.

Catalog #8061 \$69.00

Beer Sampling Pig-Tail

304 Stainless steel pig-tail for installation to bright tank with 1-1/2" TC connection.

Catalog #2692 - \$95.00

© G.W. KENT, INC. March, 2012

© G.W. KENT, INC. March, 2012

Vacuum & Pressure Relief Valve

Made of 304 stainless steel with TC connections. Sanitary design and construction for beer tank.

Item	Pressure Rating	Tank Connection	Catalog	Price
Vacuum & Pressure Relief Valve	15 psi	1-1/2" TC	96-15	\$179.00
Vacuum & Pressure Relief Valve	30 psi	1-1/2" TC	96-15A	\$179.00
Vacuum & Pressure Relief Valve	15 psi	2"	96-20	\$199.00
Vacuum & Pressure Relief Valve	30 psi	2"	96-20A	\$199.00
Adjustable Vacuum & Pressure Relief Valve 2" TC	15 psi - 44 psi.	2"	96-33	\$250.00



Bunging Device

A unique pressure device for beer fermenter, German bunging apparatus. Sanitary design and easy to take apart for cleaning. Bunging apparatus are used to set up and adjust pressure continuously within a range. The desired limited overpressure is at brewer's discretion and tank pressure rating. The correct setting of the bunging pressure will prevent the production of too much bunged or stale beers.

Made of 304 stainless steel, pressure can be calibrated from 1 bar to 3 bar to meet tank pressure rating.

- Adjustable spring for pressure
- Available in 1.5" TC, 2" TC or DIN 25 mm. connection to tank fitting, please specify connection.
- Can be CIP
- Temperature range 0 - 95° C

Catalog #96-35 \$759.00

Made of 304 stainless steel, pressure can be calibrated from 1 bar to 3 bar to meet tank pressure rating.

- Weight-loaded bunging pressure adjustment.
- Available in 1.5" TC, 2" TC or DIN 25 mm. connection to tank fitting, please specify connection.
- Can be CIP
- Temperature range 0 - 95° C

Catalog #96-38 \$859.00



Tank Thermometer & Thermo Well

Bimetal thermometer in stainless steel for tank thermometer well. Superior quality and accuracy with calibrate reset screw.

Features:

- Dial face: 3" stainless steel.
- Connection: 1/2" NPT.
- Accuracy: +/- 2%.
- Dual scale F & C in color

Item	Temp. Range	Probe Length	Catalog	Price
Tank Thermometer	0-150°	2.5"	2823-1	\$16.00
Tank Thermometer	0-150°	5"	2823-2	\$16.00
Tank Thermometer	0-150°	6"	2823-3	\$16.00
Tank Thermometer	0-150°	9"	2823	\$16.00
Tank Thermometer	0-250°	2.5"	2823-6	\$16.00
Tank Thermometer	0-250°	9"	2823-7	\$16.00



Tank Thermometer Well

- Sanitary 304 stainless steel thermo-well
- Thermometer thread connection is 1/2" NPT female

Item	Probe Length	Tank Mount	Catalog	Price
2-1/2" Sanitary TC Thermometer Well	2-1/2"	1-1/2" TC	80-153	\$39.00
5" Sanitary TC Thermometer Well	5"	1-1/2" TC	80-154	\$39.00
9" Sanitary TC Thermometer Well	9"	1-1/2" TC	80-155	\$39.00
9" probe Thermometer Well	9"	Welding	80-15	\$49.00



Tank Sight Gauge Valve & Sight Glass

Tank sight gauge for liquid level display. Bottom sight gauge is a 3-way valve to control tank volume display. Glass tube for sight gauge is not included.

Item	Catalog	Price
Level Sight Gauge Bottom Valve 1-1/2" TC	80-21	\$95.00
Level Sight Gauge Top Valve 1-1/2" TC	80-22	\$69.00



Fit tank sight gauge valve, tank level sight glass with stainless steel protector. Price is for glass and stainless steel protector only.

Item	Length	Catalog	Price
Tank Sight Glass & Stainless Steel Protector	36"	80-223	\$129.00
Tank Sight Glass & Stainless Steel Protector	48"	80-224	\$149.00
Tank Sight Glass & Stainless Steel Protector	60"	80-222	\$179.00



© G.W. KENT, INC. March, 2012

© G.W. KENT, INC. March, 2012



Streamline Strainer

Sanitary streamline strainer contains a perforated stainless steel basket and a wire mesh basket that allows removing large particles, seeds hops, and foreign particles from process stream. Strainers are suitable for horizontal or vertical mounting, directly into the pipe work.

Features:

- Material 304 stainless steel, sanitary construction.
- Two basket, perforated screen and mesh screen.
- Inlet & outlet 2" TC
- Overall length (clamp to clamp) is 15-1/4".

Catalog #2020 - \$345.00



Sanitary Strainer

A strainer is a device that removes larger particle from liquid, using a perforated tube or mesh screen. Strainers can be used individually or in tandem with filter to remove larger particle, ideal for removing grain or hop particles prior to heat exchange.

Super Strainer

Sanitary strainer contains a housing and a perforated stainless steel basket insert for removal of particles larger than 1/4". Strainer can be used with a 10 micron screen gasket (not included) for finer particles removal. Liquid entry from top/side port and exit on bottom. Overall dimension is 4" x 40" L. Rubber band is included to hold sock screen for additional straining. Supersock is available to fit over screen for finer particle (not included).

Features:

- Material 304 stainless steel, sanitary construction.
- Basket insert diameter 3" and length 30", hole 1/4" for high capacity flow.
- Inlet & outlet 2" TC

Catalog #2023 \$495.00

Supersock

Designed to fit over screen of superstrainer for finer particle removal. Pack 10 per bundle.

Catalog #4046 \$5.00 / bundle of 10



Sanitary Pipe Spool & Pipes

Sanitary Pipe Spool

Pre-fabricated sanitary pipe spool in 304 stainless with TC connection.



Pipe size	Length	Connection	Catalog	Price
1" Sanitary Pipe Spool	6"	1.5" TC	604-1	\$29.00
1" Sanitary Pipe Spool	12"	1.5" TC	604-2	\$39.00
1" Sanitary Pipe Spool	24"	1.5" TC	604-3	\$59.00
1-1/2" Sanitary Pipe Spool	6"	1.5" TC	604-5	\$29.00
1-1/2" Sanitary Pipe Spool	12"	1.5" TC	604-6	\$49.00
1-1/2" Sanitary Pipe Spool	18"	1.5" TC	604-17	\$54.00
1-1/2" Sanitary Pipe Spool	24"	1.5" TC	604-7	\$59.00
1-1/2" Sanitary Pipe Spool	30"	1.5" TC	604-18	\$69.00
1-1/2" Sanitary Pipe Spool	36"	1.5" TC	604-19	\$79.00
2" Sanitary Pipe Spool	6"	2" TC	604-8	\$39.00
2" Sanitary Pipe Spool	12"	2" TC	604-9	\$59.00
2" Sanitary Pipe Spool	24"	2" TC	604-10	\$79.00
2" Sanitary Pipe Spool	49'	2" TC	604-11	\$129.00
3" Sanitary Pipe Spool	6"	3" TC	604-12	\$49.00
4" Sanitary Pipe Spool	6"	4" TC	604-14	\$59.00
4" Sanitary Pipe Spool	12"	4" TC	604-15	\$89.00
4" Sanitary Pipe Spool	48"	4" TC	604-16	\$279.00

Sanitary Processing Piping

Stainless steel pipe for food and beverage processing, with inside and outside polished and meets 3A standard. We stock both 304 stainless and 316 stainless steel. All tube in 20 ft. length and sold in full 20 ft. length only. Cutting upon request with cutting charge applied. Please email or call for price quote, price changes based on commodity pricing and volume.

Features:

- ASTM 249-08 / ASME SA 249-E07 3A 33-02 sanitary pipe, 0.065 wall
 - Welded tube, inside and outside polished, ID 20u in Ra and OD 30u in Ra.
 - Stock available in 1", 1-1/2" and 2" size, in 304 stainless steel.
- Sizes available 1/2" up to 8"



Pipe Hanger

For tank and processing pipe installation. 304 stainless steel.

Item	Catalog	Price
1" Stainless Steel Pipe Hanger	6041	\$3.00
1-1/2" Stainless Steel Pipe Hanger	6042	\$3.50
2" Stainless Steel Pipe Hanger	6043	\$4.00



Manifold

Perfect for filling and bottling run, or any multi-tasking operation, 304 stainless steel sanitary designed and construction.



Item	Connection	Total Length	Catalog	Price
3 port Manifold	1.5" TC	16"	3201	\$125.00
5 port Manifold	1.5" TC	20"	3200	\$145.00

- Custom manifold in any pipe size and configuration, please email: info@gwkent.com



Air Driven Diaphragm Pumps

Flojet has a patented shuttle valve that eliminates stalling & provides long service life.

Features:

- Santopreme diaphragm, EPDM check valve
- Sanitary design with inset molded diaphragm.
- Flow rate up to 5 GPM
- Pressure: 20 to 100 psi.
- 3/4" Hose Barb with quick disconnect ports.
- Catalog #5931 \$96.00



Motor Driven Diaphragm Pumps

Four piston designed pump with excellent self-priming capability and built-in pressure switch automatically starts and stops pump instantaneously when discharge valve opens and closes. Compact design and plug-in port fitting. Powerful permanent magnet motor with low current draw.

Features:

- Santopreme diaphragm, EPDM check valve
- 115 v. with 6 ft. cord & plug
- Flow rate up to 5 GPM
- 45 psi pressure switch
- 3/4" Hose Barb (can be changed out to other size).
- Catalog #5936 \$145.00



© G.W. KENT, INC. March, 2012

© G.W. KENT, INC. March, 2012

Butt Weld Valves & Fittings



Butterfly Valve Butt Weld

304L stainless steel, sanitary mirror polish and meets 3-A standards.

Item	Catalog	Price
1" Butterfly Valves Butt Weld	91-10	\$74.00
1-1/2" Butterfly Valves Butt Weld	91-15	\$80.00
2" Butterfly Valves Butt Weld	91-20	\$90.00
2-1/2" Butterfly Valves Butt Weld	91-25	\$105.00

Hose Adaptor Butt Weld

316 stainless steel	Catalog	Price
1" Hose Adaptor Butt Weld	825-10	\$17.00
1-1/2" Hose Adaptor Butt Weld	825-15	\$25.00
2" Hose Adaptor Butt Weld	825-20	\$29.00
3" Hose Adaptor Butt Weld	825-30	\$45.00

Tee Butt Weld

304L stainless steel, heavy wall, sanitary mirror polish and meets 3-A standards.

Item	Catalog	Price
1" Tee Butt Weld	7W-10	\$17.00
1-1/2" Tee Butt Weld	7W-15	\$20.00
2" Tee Butt Weld	7W-20	\$27.00
2-1/2" Tee Butt Weld	7W-25	\$29.00

Reducer Butt Weld

304L stainless steel, heavy wall, sanitary mirror polish and meets 3-A standards.

Item	Catalog	Price
1"x1-1/2" Concentric Reducer Butt Weld	31W-1	\$19.00
1-1/2" x 2" Concentric Reducer Butt Weld	31W-2	\$20.00
2" x 3" Concentric Reducer Butt Weld	31W-4	\$40.00
1" x 1-1/2" Eccentric Reducer Butt Weld	32W-1	\$20.00
1-1/2" x 2" Eccentric Reducer Butt Weld	32W-2	\$29.00
2" x 2-1/2" Eccentric Reducer Butt Weld	32W-3	\$35.00

Check Valves Butt Weld

304L stainless steel, sanitary mirror polish and meets 3-A standards.

Item	Catalog	Price
1" Check Valves Butt Weld	95-10	\$85.00
1-1/2" Check Valves Butt Weld	95-15	\$110.00
2" Check Valves Butt Weld	95-20	\$125.00

Sight Glass Butt Weld

304L stainless steel, sanitary mirror polish and meets 3-A standards.

Item	Catalog	Price
1" Sight Glass Butt Weld	93-10	\$65.00
1-1/2" Sight Glass Butt Weld	93-15	\$75.00
2" Sight Glass Butt Weld	93-20	\$80.00
2-1/2" Sight Glass Butt Weld	93-25	\$90.00

Elbow - Butt Weld

304L stainless steel, heavy wall, sanitary mirror polish and meets 3-A standards.

Item	Catalog	Price
90° Elbow Butt Weld 1"	2CW-10	\$9.00
90° Elbow Butt Weld 1-1/2"	2CW-15	\$15.00
90° Elbow Butt Weld 2"	2CW-20	\$17.00
90° Elbow Butt Weld 2-1/2"	2CW-25	\$30.00
45° Elbow Butt Weld 1"	2KW-10	\$16.00
45° Elbow Butt Weld 1-1/2"	2KW-15	\$26.00
45° Elbow Butt Weld 2"	2KW-20	\$32.00
45° Elbow Butt Weld 2-1/2"	2KW-25	\$50.00

DIN Fittings

Sanitary pipe fittings, commonly used with European equipment in 304L stainless steel. This is not Acme or I-Line. Please confirm metric size with drawings or equipment manufacturer.

DIN Liner

Item	Catalog	Price
DIN 15 mm Ferrule Liner	DIN6-1	\$9.50
DIN 20 mm Ferrule Liner	DIN6-2	\$9.50
DIN 25 mm Ferrule Liner	DIN6-3	\$9.50
DIN 32 mm Ferrule Liner	DIN6-4	\$9.50
DIN 40 mm Ferrule Liner	DIN6-15	\$12.50
DIN 50 mm Ferrule Liner	DIN6-20	\$14.50
DIN 65 mm Ferrule Liner	DIN6-5	\$24.00

DIN Male Ferrule

Item	Catalog	Price
DIN 15 mm Male Ferrule	DIN5-1	\$12.50
DIN 20 mm Male Ferrule	DIN5-2	\$12.50
DIN 25 mm Male Ferrule	DIN5-3	\$12.50
DIN 32 mm Male Ferrule	DIN5-4	\$14.50
DIN 40 mm Male Ferrule	DIN5-15	\$16.50
DIN 50 mm Male Ferrule	DIN5-20	\$18.50
DIN 65 mm Male Ferrule	DIN5-5	\$21.50

DIN Nut

Item	Catalog	Price
DIN Nut 15 mm	DIN7-1	\$12.50
DIN Nut 20 mm	DIN7-2	\$12.50
DIN Nut 25 mm	DIN7-3	\$12.50
DIN Nut 32 mm	DIN7-4	\$15.50
DIN Nut 40 mm	DIN7-15	\$19.50
DIN Nut 50 mm	DIN7-20	\$21.50
DIN Nut 65 mm	DIN7-5	\$29.00

DIN Silicone Gasket

Item	Catalog	Price
DIN 15 mm Silicone Gasket	DIN8-15	\$5.00
DIN 20 mm Silicone Gasket	DIN8-20	\$6.00
DIN 25 mm Silicone Gasket	DIN8-25	\$7.00
DIN 32 mm Silicone Gasket	DIN8-32	\$7.50
DIN 40 mm Silicone Gasket	DIN8-40	\$7.50
DIN 50 mm Silicone Gasket	DIN8-50	\$8.50
DIN 65 mm Silicone Gasket	DIN8-65	\$14.00



DIN Liner Hose Adaptor

304 stainless steel	Catalog	Price
DIN 15 mm Lin Hose Adaptor	DIN-15	\$29.00
DIN 25 mm Liner Hose Adaptor	DIN2-25	\$29.00
DIN 32 mm Liner Hose Adaptor	DIN2-32	\$35.00
DIN 40 mm Liner Hose Adaptor	DIN2-40	\$39.00
DIN 50 mm Liner Hose Adaptor	DIN2-50	\$49.00
DIN 65 mm Liner Hose Adaptor	DIN2-65	\$69.00

DIN Male Thread Hose Adaptor

304 stainless steel	Catalog	Price
DIN 15mm Male Hoe Adaptor	DIN4-15	\$29.00
DIN 25 mm Male Hose Adaptor	DIN4-25	\$29.00
DIN 32 mm Male Hose Adaptor	DIN4-32	\$35.00
DIN 40 mm Male Hose Adaptor	DIN4-40	\$39.00
DIN 50 mm Male Hose Adaptor	DIN4-50	\$49.00
DIN 65 mm Male Hose Adaptor	DIN4-65	\$69.00

DIN End Cap with Chain

Item	Catalog	Price
DIN 15 mm End Cap with Chain	DIN-13AH15	\$19.00
DIN 20 mm End Cap with Chain	DIN-13AH20	\$19.00
DIN 25 mm End Cap with Chain	DIN-13AH25	\$19.00
DIN 32 mm End Cap with Chain	DIN-13AH32	\$22.00
DIN 40 mm End Cap with Chain	DIN-13AH40	\$24.00
DIN 50 mm End Cap with Chain	DIN-13AH50	\$29.00
DIN 65 mm End Cap with Chain	DIN-13AH65	\$65.00

DIN Wrench

DIN Wrench for tightening DIN Nut. Please see detail size & prices online.

DIN Elbow & Tee coming soon!

Please go to www.gwkent.com for price

© G.W. KENT, INC. March, 2012

© G.W. KENT, INC. March, 2012

Manway

Premium stainless steel tank manway doors. Includes door seal and neck ring for welding, sold as complete door assembly for tank fabrication. Available in 304L stainless steel from stock. 316L material is available from stock or special production.

13" x 17" Square Manway Doors

- 304 stainless steel
- Door opening 13" x 17", opens outward
- Door thickness 14 gauge (2 mm), welding neck ring height is 2.5"
- Maximum pressure 15 psi

Catalog #80-451 \$395.00

16" x 21" Square Upright Manway Doors

- 304 stainless steel
- Door opening 17" x 20", opens outward
- Door thickness 14 gauge (2 mm), welding neck ring height is 2.5"
- Maximum pressure 15 psi

Catalog #80-452 \$495.00

Square Side Manway Door 12" x 16.5"

- 304 stainless steel
- Door opening 12" x 16.5", opens outward with single bar and stainless steel locking handle
- Door thickness 14 gauge (2 mm), welding neck ring 2"
- Maximum pressure 7 psi

Catalog #80-48 \$450.00

Upright Side Manway Door 21" x 16"

- 304 stainless steel
- Door opening 21" x 16", opens outward with two bars and stainless steel locking handle
- Door thickness 14 gauge (2 mm), welding neck ring height 2.5"
- Maximum pressure 15 psi

Catalog #80-482 \$550.00

Rectangular Side Manway Door 17" x 21"

- 304 stainless steel
- Door opening 17" x 21", opens outward with two bars and stainless steel locking handle
- Door thickness 14 gauge (2 mm), welding neck ring height 2.37"
- Maximum pressure 15 psi.

Catalog #80-483 \$550.00

16" Round Side Manway

- 304 stainless steel
- Opens outward with stainless steel handle.
- Door thickness 1.5 mm (16 gauge), welding neck ring height 3.15"
- Maximum pressure 15 psi.

Catalog #80-49 \$550.00



© G.W. KENT, INC. March, 2012

© G.W. KENT, INC. March, 2012

Oval Side Manway Door 13" x 17"

- Door opening 13" x 17", opens inward.
- Door thickness 14 gauge (2 mm).
- Maximum pressure 45 psi.

Catalog #80-50 \$295.00



Oval Side Manway Door 17" x 21"

- Door opening 17" x 21", opens inward.
- Door thickness 14 gauge (2 mm), welding neck ring height is 3.9"
- Maximum pressure 45 psi.

Catalog #80-502 \$395.00

Manhole Cover

Manhole covers designed for welding on top of tank, available in 304 and 316 stainless steel and sanitary polished. Complete manhole assembly, includes door, seals and welding neck ring. Seals material available in silicone or EPDM.

304 stainless steel	Neck Ring Ht.	Catalog	Price
Manhole Cover 16"	2-1/4"	80-32	\$225.00
8" Round Manhole Cover	4"	80-351	\$139.00
16" Round Manhole Cover	4"	80-352	\$195.00
18" Round Manhole Cover	4"	80-353	\$229.00
20" Round Manhole Cover	4"	80-354	\$289.00
24" Round Manhole Cover	4"	80-355	\$349.00



316 stainless steel	Neck Ring Ht.	Catalog	Price
8" Round Manhole Cover	4"	80-351P	\$169.00
16" Round Manhole Cover	4"	80-352P	\$259.00
18" Round Manhole Cover	4"	80-353P	\$295.00
20" Round Manhole Cover	4"	80-354P	\$379.00
24" Round Manhole Cover	4"	80-355P	\$439.00



304 stainless steel Pressure type	Max. Pressure	Neck Ring Ht.	Catalog	Price
16" Round Pressure Manhole	60 psi	4"	80-602	\$329.00
18" Round Pressure Manhole	60 psi	4"	80-603	\$369.00
20" Round Pressure Manhole	60 psi	4"	80-604	\$489.00
24" Round Pressure Manhole	60 psi	4"	80-605	\$659.00

316 stainless steel Pressure type	Max. Pressure	Neck Ring Ht.	Catalog	Price
16" Round Pressure Manhole	60 psi	4"	80-602P	\$429.00
18" Round Pressure Manhole	60 psi	4"	80-603P	\$549.00
20" Round Pressure Manhole	60 psi	4"	80-604P	\$799.00
24" Round Pressure Manhole	60 psi	4"	80-605P	\$849.00



Barrel Racks

Metal Barrel Racks - Powder Coated

Fits 59 gallon standard Bordeaux, Burgundy and American barrels. Standard fork opening is 7" for easy racking, with double cross bar support. Made in U.S.A.



Item	Material	Stacking	Pallet Jackable	Catalog	Price
Double Barrel Rack	Powder Coated Mild Steel	Up to 5 high	No	2993	\$129.00
Base Half Rack	Powder Coated Mild Steel	No	Yes	2994	\$89.00

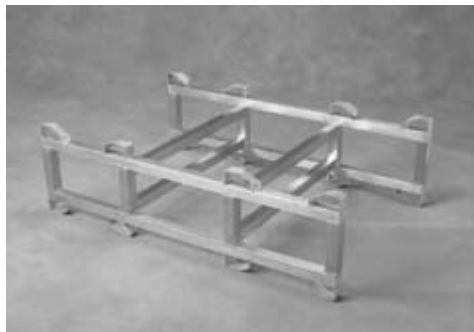


Stainless Steel Barrel Rack

Fits 59 gallon standard Bordeaux, Burgundy and American barrels.

- Standard fork opening is 7" for easy racking, with double cross bar support.
- Made of 304L stainless steel, thickness 1.5 mm (16 gauge).
- Rack is electro-polished after treatment of pickling and passivating process. Stainless steel Surface is bright, clean and microscopically smooth. Better rust and corrosion protection, easy to clean.
- Stacking height of 5 layers.

Item	Material	Stacking	Pallet Jackable	Catalog	Price
Double Barrel Rack	304 stainless steel	Up to 5 high	No	2991	\$195.00
Base Half Rack	304 stainless steel	No	Yes	2991-2	\$115.00



Stainless Steel Barrels 75 gallon

Designed to fit on barrel rack for portability and stackability. Sanitary construction and polish, easy to clean. Perfect storage solution for small lot storage of wine & spirits.

Features:

- Made of 304L stainless steel, 14 gauge (2 mm thickness)
- 75 gallons capacity with one 2" TC ferrule welded on belly.
- Fits on standard barrel rack, with roll rim.
- Measurement: 25.6" diameter x 40" height

Catalog #2757 Quantity 1 - 11 \$849.00
 12 + \$799.00

© G.W. KENT, INC. March, 2012

Barrel Tools & Accessories

Bulldog Barrel Transfer Tube

A simple device to pressurize barrel and move liquid out of barrel. Very gentle and no air introduced into barrel. 1" stainless steel tube and connection is 1-1/2" TC with adjustable screw for height. Includes 1" sight glass and fitting for monitoring of lees. Gas connection is 1/4" MNPT and includes shut off ball valve.

Catalog #2980 - \$395.00



Barrel Cleaning Nozzle

Features:

- Coverage of 3 to 6 ft in diameter in 180°
- Connection 3/4" NPT female
- Diameter 1.25" and length 2.75"
- Working pressure 1 to 4 bar

Catalog #80-93 \$125.00

L-Shape Wand

3/4" wand with NPT pipe connection to barrel cleaning nozzle and water hose. This handy wand allows you to reach into barrel bung hole while leaving barrel on rack. Barrel cleaning nozzle sold separately.

Catalog #80-93A \$24.00



© G.W. KENT, INC. March, 2012

Barrel Filler

Filler fits into barrel bung hole, 1" filling tube for fast and easy filling of barrel. Push down handle with locking pin for hand-free filling. No automatic shut off and no liquid sensor, need to monitor flow or use a flow meter for control during filling.

Catalog #2985 - \$145.00



Barrel Washing Stand

Stainless steel stand for barrel cleaning with a rotating jet spray barrel cleaning head, efficiently clean barrel. Including a stainless steel 3/4" ball valve for water shut-off. For best cleaning result, we suggest hot water use with water pressure of 40 to 60 psi.
Catalog #2986 - \$325.00



Sulfur Disque Holder for Barrel

Made of 304 stainless steel with silicone stopper to fit and seal barrel bung hole with Sulfur gas. Easy removal from barrel to barrel. Mesh basket with a wire to secure sulfur disque in place.
Catalog #2920 - \$24.00

Sulfur Disque 5 gram size
Catalog #291 \$29.00 / 2.2 lb. box

Barrel Topping Gun

Barrel topping gun can be used with pressurized keg to add small amount of wine to barrel. With 1/2" hose barb connection and push down handle can be used with barrel on stack on barrel rack, it's easy to use and efficient.
Catalog #2984 \$125.00



Curved Barrel Racking Tube

Barrel racking tube can be used with pump to move wine out of barrel. Curved shape racking tube with 1" stainless steel pipe in 304 stainless steel, length is 32" with a 1-1/2" TC connection.
Catalog #2988 - \$75.00



Straight Barrel Racking Tube

304 stainless steel barrel racking tube with 1-1/2" TC connection and adjustable height for less. Sanitary quality.
Catalog #2982 - \$60.00



Oak Chip Infusion Tube for Barrel

For neutral barrel, adding oak flavor is easy for this 1" stainless steel tube with holes to hold oak chips for flavor extraction. Sanitary construction in 304 stainless steel with a silicone plug and a silicone stopper for bung hole. Easy to clean, can be removed from barrel at desired time.
Catalog #2981 - \$49.00



Straight Pyrex Glass Barrel Thief

Pyrex glass thief with 1-1/2" OD by 24" long
Catalog #2983-7 \$55.00

Curved Pyrex Glass Barrel Thief

Curved pyrex glass thief with 1-1/2" OD by 24" long.
Catalog #2983-5 \$69.00



Glass Thief

Glass thief straight, pack 10 per box.
Catalog #2983-2 \$39.00 / case of 10.

Poplar Wood Bung 2"

Catalog #2967 \$5.00 / bag of 10.



Mesh Bag

Fine mesh bag for straining, pressing or infusion. Sanitary food grade made of polyester, reusable and washable.

Small Infusion / straining Bag

Small mesh bag, 18" long with width stretch up to 5".
Catalog #4040 - \$17.00 / 100 pcs. in a bundle

Infusion / straining Bag

Large mesh bag, 40" long with width stretch up to 48". FDA approved material.
Catalog #4044 - \$15.00 / 10 pcs. in a bundle



Oak Barrel Sample Valve

For installation to oak barrel or cask. A 5/8" hole needs to be drilled on barrel for sample valve to be threaded into wood.
Catalog #8061 \$69.00



Silicone Barrel Bung

48 x 55 mm solid barrel bung to seal barrel for aging. Flange top fits over bung hole for easy removal.

Item	Catalog	Price
Solid Barrel Bung	2968	\$4.95
Barrel Bung with Hole	2968H	\$4.95
Barrel Fermentation Bung	2969	\$5.95

Silicone Barrel Fermentation Bung

Two piece designed, with open vent it can be used for fermentation to allow CO₂ to escape from Barrel. When center silicone piece is pushed in and locked, it can be used as a solid bung for aging.



© G.W. KENT, INC. March, 2012

© G.W. KENT, INC. March, 2012

Oak Products

Our oak products allow brewers to add oak flavor and character from a wide variety of oak and toast levels to beer. We offer premium oak products made with oak seasoned for 24 months, with unique toasting process to create flavor and aroma without harsh and bitter wood tannin components. Oak product can be placed in small tank or keg to extract oak flavor, which can be blended back with beer prior to transfer to brite tank.



Granular Oak Powder

For fast flavor extraction, granular oak powder is recommended, dosage is 0.5 to 1 pound per barrel of beer.

Item	Toasting	Flavor	Packaging	Catalog	Price
French Oak Chips	Medium	Subtle vanilla, & butterscotch	50 lb. bag	4549-9	\$175.00
American Oak Chips	Light	Smooth & rich mouth feel	50 lb. bag	4549-1	\$95.00
American Oak Chips	Medium	Vanilla, carmel & smooth	50 lb. bag	4549-2	\$95.00
American Oak Chips	Heavy Toast	Carmel, smokiness & rich	50 lb. bag	4549-3	\$95.00

Oak Chips

Recommended dosage is 1 to 2 pound per barrel of beer.



Item	Toasting	Flavor	Packaging	Catalog	Price
French Oak Chips	Medium	Subtle vanilla, & butterscotch	50 lb. bag	297-4	\$199.00
American Oak Chips	Light	Smooth & rich mouth feel	50 lb. bag	4547-1	\$75.00
American Oak Chips	Medium	Vanilla, carmel & smooth	50 lb. bag	4547-2	\$75.00
American Oak Chips	Heavy Toast	Carmel, smokiness & rich	50 lb. bag	4547-3	\$75.00

Oak Barrel Sticks

For use in neutral barrels, each set consists of two 16 piece of linked sticks to enhance flavor. Medium toast with 24 month air seasoned French oak, easy to maintain and re-use. Stick measures 13" long x 1-1/4" wide x 3/8" thick, bundle measures 9.6 sq. ft. of oak surface.

Item	Toasting	Packaging	Catalog	Price
French Oak Barrel Sticks	Medium	2 x 16 pcs. link	297-6	\$49.00
American Oak Barrel Sticks	Medium	2 x 16 pcs. link	297-7	\$39.00



Oak Stave Tank Insert

For use in stainless steel tanks, oak staves measure 40" long x 3" wide x 3/8" thick. Assembled with 10 pcs. staves into a FAN bundle and provides 26 sq. ft. of oak surface. Medium toast with 24 month air seasoned French oak. Each set is sufficient for about 100 gallons of wine.

Item	Toasting	Packaging	Catalog	Price
French Oak Stave Tank Insert	Medium	10 pcs./ bungle	297-8	\$46.00
American Oak Stave Tank Insert	Medium	10 pcs. / bungle	297-9	\$49.00

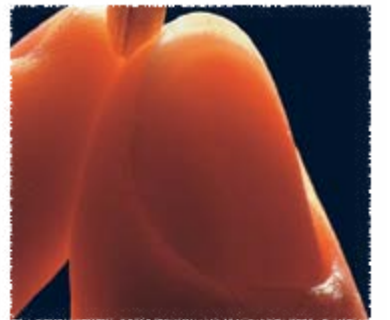


© G.W. KENT, INC. March, 2012

Durst malt of Germany has been a tradition for the past 175 years, delivering best ingredients for the best beer. Stringent quality control of German barley and malting, generations of know-how and state of the art malting equipment. Durst malt satisfies breweries all over the world. Available in 55 lb. bags, supersack of 1925 lb. shipping from Michigan warehouse. We deliver bagged malt or bulk container directly from Germany to brewery through out U.S. Competitive quote for full container upon request.



GERMANY



Durst Whole Kernel Malt

Item	Catalog	55 bag Price	55 lb. Pallet price (no mix or match)	1925 lb. Supersack
Durst Pilsner Malt	5250	\$33.00 (\$0.60/lb.)	\$30.00 (\$0.55/lb.)	\$0.54 / lb.
Durst Pale Ale Malt	5249	\$33.00 (\$0.60/lb.)	\$30.00 (\$0.55/lb.)	\$0.54 / lb.
Durst Munich Malt 20 EBC	5251	\$33.00 (\$0.60/lb.)	\$30.00 (\$0.55/lb.)	\$0.54 / lb.
Durst Munich Malt 40 EBC	5257	\$33.00 (\$0.60/lb.)	\$30.00 (\$0.55/lb.)	\$0.54 / lb.
Durst Vienna Malt	5252	\$33.00 (\$0.60/lb.)	\$30.00 (\$0.55/lb.)	\$0.54 / lb.
Durst Crystal Pils Malt	5247	\$47.00 (\$0.85/lb.)	\$44.00 (\$0.80/lb.)	N/A
Durst Crystal Malt 120 EBC	5254	\$47.00 (\$0.85/lb.)	\$44.00 (\$0.80/lb.)	N/A
Durst Wheat Malt	5255	\$33.00 (\$0.60/lb.)	\$30.00 (\$0.55/lb.)	\$0.54 / lb.
Durst Turbo Pilsner	5400	\$33.00 (\$0.60/lb.)	\$30.00 (\$0.55/lb.)	\$0.54 / lb.
Durst Turbo Vienna	5403	\$33.00 (\$0.60/lb.)	\$30.00 (\$0.55/lb.)	\$0.54 / lb.
Durst Turbo Munich 20 EBC	5401	\$33.00 (\$0.60/lb.)	\$30.00 (\$0.55/lb.)	\$0.54 / lb.
Durst Acidulated Malt	5240	\$47.00 (\$0.85/lb.)	\$44.00 (\$0.80/lb.)	N/A

Typical Analysis	Moisture %	Extract %	Color in EBC	Protein %	Soluble Nitrogen	Kolbach Index	Hartong Index	pH	Friability	Glassy Kernels	Betagalcan mg/l.	Diastatic Power	Attenuation
Pilsner Malt	4	83 - 84	3.4	10	0.67	44	40	5.8	82	<3 >145	194	275	82
Turbo-Pilsner Malt	4	82 - 83	3.8	10	0.71	47	44	5.8	85	<3 >150	108	289	83
Munich 20 EBC	3.6	81 - 82	20.0	10	0.72	43	44	5.6	76	<3 >150	220	221	80
Munich 40 EBC	3.6	81 - 82	40.0	10	0.74	44	45	5.4	77	<3 >150	186	195	80
Turbo-Munich	4	82 - 83	20/40	10	0.76	48	52	5.4	78	<3 >150	166	241	82
Vienna Malt	4	82 - 83	9.0	10	0.7	44	43	5.5	83	<3 >150	141	282	82
Turbo-Vienna Malt	4	82 - 83	7.0	10	0.74	48	45	5.6	85	<3 >150	123	276	82
Pale Ale Malt	3.5	82 - 83	6.5	10	0.66	44	42	5.8	82	<3 >150	180	212	82
Wheat Malt	4	82 - 86	3.5	11	0.75	40	37	5.9					
Crystal-Pils Malt	5.5	82 - 83	4.0										
Crystal 120 EBC	5.5	75 - 77	120.0										
Acidulated Malt	7	75 - 77	5 - 7										

© G.W. KENT, INC. March, 2012





Brewers can count on Briess malts to deliver rich flavor and color to all their beers. For more than 130 years brewers have relied upon Briess malts for superior brewhouse performance and consistent brews, batch after batch. Rich and flavorful malts shipped fresh from America's heartland.



Briess Whole Kernel Malt 50 lb. bag

Item	Catalog	Price
Briess Pilsner Whole Kernel Malt	5201	\$36.00
Briess Munich 10 L. Whole Kernel Malt	5205	\$38.00
Briess 2-row Brewer's Whole Kernel Malt	5214	\$32.00
Briess Pale Ale Whole Kernel Malt	5215	\$36.00
Briess Victory Whole Kernel Malt	5216	\$47.00
Briess Special Roast Whole Kernel Malt	5217	\$48.00
Briess Smoke Whole Kernel Malt (40 lb.)	5206	\$55.00
Briess Rye Malt	5207	\$51.00
Briess Red Wheat Whole Kernel Malt	5203	\$35.00
Briess Carapils Whole Kernel Malt	5208	\$45.00
Briess Caramel 20 L. Whole Kernel Malt	5211	\$45.00
Briess Caramel 40 L. Whole Kernel Malt	5212	\$45.00
Briess Carmel 60 L. Whole Kernel Malt	5204	\$45.00
Briess Caramel 80 L. Whole Kernel Malt	5213	\$45.00
Briess Caramel 120 L. Whole Kernel Malt	5209	\$45.00
Briess Chocolate Whole Kernel Malt	5219	\$48.00
Briess Black Whole Kernel Malt	5218	\$48.00
Briess Roasted Barley Whole Kernel Malt	5210	\$48.00
Briess Midnight Wheat Malt	5220	\$52.00

Briess Premilled Malt 50 lb. bag

Item	Catalog	Price
Briess Preground Pilsner Malt	5265	\$39.00
Briess Preground 2-row Brewer's Malt	5269	\$36.00
Briess Preground Pale Ale Malt	5270	\$39.00
Briess Preground Vienna Malt	5272	\$39.00
Briess Preground Munich Malt 20 L.	5267	\$40.00
Briess Preground Munich Malt 10L.	5271	\$40.00
Briess Preground Wheat Malt (Red)	5279	\$38.00
Briess Preground Carapils Malt	5274	\$48.00
Briess Preground Malt Caramel 40 L.	5275	\$48.00
Briess Preground Malt Caramel 20 L.	5280	\$48.00
Briess Preground Malt Caramel 80 L.	5281	\$48.00
Briess Preground Malt Caramel 60 L.	5284	\$48.00
Briess Preground Victory Malt	5273	\$49.00
Briess Preground Chocolate Malt	5276	\$50.00
Briess Preground Black Malt	5277	\$50.00
Briess Preground Roasted Barley	5278	\$50.00

Briess Malt Extract

Briess CBW pure malt extracts are rich, full-flavored and made fresh in America's heartland. They produce excellent beer or, in all-grain brews, increase capacity / productivity, boost gravity, adjust color, adjust flavor and improve body and head retention.

Item	Packaging	Catalog	Price
Briess Gold Liquid Malt Extract	33 lb.	5141	\$44.00
Briess Gold Dried Malt Extract	50 lb.	519-1	\$109.95

Adjuncts

Item	Packaging	Catalog	Price
Dextrose (Corn Sugar)	50 lb.	4550	\$24.50
Briess Flaked Barley	25 lb.	5222	\$22.00
Briess Flaked Yellow Corn	25 lb.	5223	\$24.00
Briess Flaked Oats	25 lb.	5224	\$24.00
Briess Flaked Rye	25 lb.	5225	\$22.00
Briess Flaked Wheat	25 lb.	5226	\$22.00
Briess Flaked Rice	25 lb.	5227	\$25.00
Rice Hulls	50 lb.	5228	\$22.50

© G.W. KENT, INC. March, 2012

© G.W. KENT, INC. March, 2012

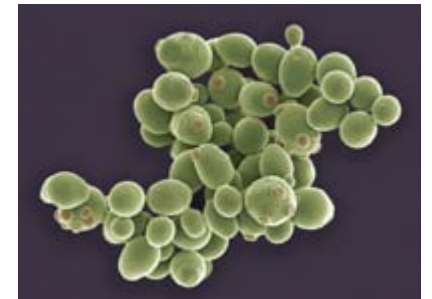
Dry Beer Yeast

Premium quality dried brewers yeast from MauriBrew of Australia.

Mauribrew Ale Dry Yeast

Selected pure active dry brewing yeast, *saccharomyces cerevisiae* strain, top fermenting ale brewing yeast. A rapid fermenter at warm temperatures, resulting in a typical fermentation time of 3 - 7 days. Optimal temperature is 62F- 86F. Beer structure may benefit from fermentation with this strain after acclimatizing to a lower temperature for prolonged yeast control at 50 - 59F. This strain rapidly attenuates fermentable sugars with a typical wort falling from a gravity of 1040 -1045 resulting in a beer of less than 1008. This ale yeast is renowned for its tolerance in commercial beer styles with up to 9.5% alcohol, produce nominal yeast head through fermentation with excellent final clarity and settling properties.

Catalog #3018 - \$35.00 / 500 gram



Mauribrew Lager Dry Yeast

Selected pure active dry brewing yeast, *saccharomyces cerevisiae* strain, bottom fermenting lager yeast. When temperatures are maintained at 68 deg. F. the fermentation of normal worts is complete within 5 days. When temperature is below 68 deg. F. the rate of fermentation proceeds in more controlled fashion and at a reduced rate. The strain has low oxygen requirements through fermentation. Desirable flavor characters result from ambient fermentations at 59 -86 deg. F. temperature range. Final gravity loss may be achieved through lagering down to 50 deg. F. Sweet wort OG 1040 - 1045 is fermented normally to low final gravity.

Catalog #3017 \$35.00 / 500 gram.



Mauribrew Weiss Yeast

Mauribrew Weiss produces large quantities of fermentation aromas of esters and higher alcohols that contribute to the complexity of German-style wheat beers. Mauribrew Weiss is also suitable for special beers made with macerated fruits, honey or any kind of sugar based additional ingredients (maple syrup, candy sugar, palm sugar). Recommended temperature range 15° - 30° C. A rapid fermenter at warm ambient temperatures typical fermentation of 4 - 7 days.

Catalog #3019 \$35.00/ 500 gram.

Danstar Munich Wheat Yeast

Wheat beers are among the most popular beer styles in the world, and now you can brew great wheat beer styles reliably & conveniently with premium Munich Wheat Beer yeast from Danstar. Danstar Munich Wheat Beer yeast originated in Bavaria, Germany, the home of many of the world's great wheat beer breweries. The propagation and drying processes for Munich yeast has been specifically designed to deliver high quality brewing yeast that can be used to produce wheat beers of the finest quality. No colours, preservatives or other unnatural substances have been used in its preparation. Like all our Danstar products, Munich is produced in ISO 9002 certified plants and is non-GM & gluten-free.

Catalog #3013 TBA online



Danstar Nottingham Ale Yeast

The Nottingham strain was selected for its highly flocculant & relatively full attenuation properties. It produces low concentrations of fruity and estery aromas and has been described as neutral for ale yeast, allowing the full natural flavor of malt & hops to develop.

The recommended fermentation temperature range of this strain is 14° to 21°C (57° to 70°F) with good tolerance to low fermentation temperatures (12°C/54°F) that allow this strain to be used in lager-style beer. With a relatively high alcohol tolerance, Nottingham is a great choice for creation of higher-alcohol specialty beers!

Catalog #3011 TBA online



Danstar Windsor Ale Yeast

Windsor ale yeast is a true English strain that produces a beer which is estery to both palate and nose with a slight fresh yeasty flavor. Beers created with Windsor are usually described as full-bodied, fruity English ales. Brewers choose Windsor to produce beers that range from pale ale to porter with moderate alcohol levels and the flavor & aroma characteristics of the best traditional ales.

Depending on the composition of the recipe, Windsor demonstrates moderate attenuation which will leave a relatively high gravity (density). Recommended fermentation temperature range for Windsor is 17° to 21°C (64° to 70°F).

Catalog #3012 TBA online



Fermentation Nutrients

Mauriferm Gold Nutrient

Mauriferm Gold is recommended for improving fermentation and reducing the risk of stuck and sluggish fermentations. Mauriferm Gold contains inactive yeast cell walls, nitrogen, vitamins and trace elements.

Catalog #4535 \$195.00 / 22 lb. bag

Fermaid K Fermentation Nutrient

Fermaid K supplies ammonia salts (DAP) alpha amino nitrogen, sterols, unsaturated fatty acids, key nutrients (magnesium sulfate, thiamin, folic acid, niacin, biotin, calcium pantothenate) and inactive yeast. Fermaid K should be hydrated before adding to an active fermentation to avoid CO₂ release. Recommended dosage is 2 lb. per 1000 gallon.

Catalog #4538 - \$198.00 / 22 lb. box

Go-Ferm

GO-FERM® provides bioavailable micronutrients in the non-stressful environment of the yeast rehydration water instead of the traditional method of adding micronutrients to the must. During rehydration, the yeast acts like a sponge, soaking up GO-FERM®'s bioavailable nutrients. This direct contact between GO-FERM® and the yeast in the absence of the must matrix avoids chelation of key minerals by inorganic anions, organic acids, polyphenols and polysaccharides presented. By making key minerals and vitamins available to the selected yeast at the critical beginning of its stressful task, the yeast's viability increases and fermentations finish stronger. The use of GO-FERM® results in significantly better overall health of yeast cells through-out the fermentation, affecting fermentation kinetics and resulting in a cleaner aromatic profile.

Dosage recommendations: Use 30 g/hL (2.4 lb/1000 gal) of GO-FERM® when rehydrating yeast to supply critical micronutrients. Note: This recommendation is based on a yeast inoculum of 25 g/hL (2 lb/1000 gal). If using more or less yeast, respect a ratio of 1 part yeast:1.25 parts GO-FERM®.

Catalog #4533 \$100.00 / 5.5 lb. bag

Chemicals & additives

Gypsum

Anhydrous Calcium Sulfate used to harden soft water. Typically used during the mash-in, may also be added to the hot liquor tank. It will help establish proper pH of the mash and the wort and provide sufficient calcium ions essential for enzyme function, kettle protein coagulation and yeast metabolism.

Catalog #4505 - \$30.00 / 50 lb. bag

Calcium Chloride

Hydrated calcium chloride used to correct mineral deficiencies in water. It is used in de-mineralized or soft to medium hard water to increase hardness. It will help establish proper pH of the mash and the wort and provide sufficient calcium ions essential for enzyme function, kettle protein coagulation and yeast metabolism.

Catalog #4508 - \$45.00 / 50 lb. bag

Activated Carbon

Activated carbon in damp form. Very effective in decoloring and in removing ochratoxin A. The controlled moisture present in Black PF greatly reduces the spread of carbon dust in the atmosphere and makes it easier to use.

- Application: Decolorizing and treat oxidation.
- Dosage: 20 - 100 g./hL (1.7 - 8.3 lb. / 1000 gallon).

Catalog #4526 - \$20.00 / 2.2 lb. bag

Rice Hulls

Catalog #5228 - \$22.50 / 50 lb. bag

Isinglass Powder

Obtained from the hydrolysis of skin collagen derived from wild white fish, the material is extremely pure and the method of preparation guarantees an immediate solubility. Cold water soluble powder, used for clarification of beers & wines. Improved filterability.

Recommended dosage is 0.5 lb. to 1 lb. per 1000 gallon. Dissolve in at least 10 parts of cold water, mix well and add to product.

Catalog #4520 - \$150.00 / 2.2 lb. bag

Ascorbic Acid

Used to prevent oxidation. Pack in 10 lb. bag.

Catalog #4529 - \$150.00 / lbs.

Citric Acid

To be used for acidification. Pack in 50 lb. bag.

Catalog #4530 - \$75.00 / 50 lb.

Irish Moss Powder

Carrageenan coagulant used in final 15 minutes of the boil to precipitate protein and improve formation of trub. Ideal for wort clarification and improved hot & cold breaks.

Recommended addition is approximately 2 oz. per 10 barrels. Catalog #4519 - \$90.00 / 10 lb. bag.

Dextrose (Corn Sugar)

Catalog #4550 - \$24.50 / 50 lb. bag



© G.W. KENT, INC. March, 2012

© G.W. KENT, INC. March, 2012

Lenticular Filter Housing

Lenticular filter system is as versatile as filter sheet in plate & frame filter but sanitary, easy to use and easy to change out. To make a filter system sanitary, filter sheet is installed in an enclosed sealed filter housing. Lenticular filter is expandable and cost comparable to plate & frame filter. These filter sheets are constructed in a modular design and can easily be inserted into filter housing. It's possible to back flush the modules and reuse them many times. The modules can be stored in the housing for extended periods of time, which aids in space saving. Another advantage is extremely low product losses. A 12" module 4 high system is equivalent to forty five 40 x 40 filter sheets.

Features:

- Material in 316 L. stainless steel, sanitary construction with electro polish.
- Equipped with sanitary pressure gauge, sight glass, two butterfly valves and fittings.
- Venting valve and drain included with housing.
- Filter Modules are not included.
- Back flush plate in stainless steel is optional purchase, price \$195.00.

12" Housing	Filtration surface	Dia. x Height	Catalog	Price
2 module Lenticular Filter Housing 12"	3.6 sq. meter	15.7" x 48"	3450-2	\$3295.00
3 module Lenticular Filter Housing 12"	5.4 sq. meter	15.7" x 58"	3450-3	\$3695.00
4 module Lenticular Filter Housing 12"	7.2 sq. meter	15.7" x 60"	3450-4	\$3995.00

16" Housing	Filtration surface	Dia x Height	Catalog	Price
2 module Lenticular Filter Housing 16"	10.0 sq. meter	17.7" x 48"	3451-2	\$4095.00
3 module Lenticular Filter Housing 16"	15.0 sq. meter	17.7" x 58"	3451-3	\$4595.00
4 module Lenticular Filter Housing 16"	20.0 sq. meter	17.7" x 69"	3451-4	\$4995.00



Pall SUPRAdisc II Filter Modules

Benefits of Supradisc II Module:

- Reduced filtration cost, backwashable.
- Longer service life, increase of flow rate.
- Low differential pressures
- Reliable handling, better venting and draining.
- No cell deformities after heat treatment.

Item	Particle Retention	Catalog	Price
12" SUPRAdiscII X700	7 - 15 micron	3495-4	\$195.00
12" SUPRAdiscII X300	6 - 12 micron	3495-1	\$195.00
12" SUPRAdiscII X200	4 - 6 micron	3495-5	\$195.00
12" SUPRAdisc II X100	1 - 4 micron	3495-2	\$195.00
12" SUPRAdisc II XEK	0.5 - 0.7 micron	3495-3	\$219.00
16" SUPRAdiscII X700	7 - 15 micron	3496-4	\$365.00
16" SUPRAdiscII X300	6 - 12 micron	3496-1	\$365.00
16" SUPRAdiscII X200	4 - 6 micron	3496-5	\$365.00
16" SUPRAdiscII X100	1 - 4 micron	3496-2	\$365.00
16" SUPRAdiscII XEK	0.5 - 0.7 micron	3496-3	\$395.00

© G.W. KENT, INC. March, 2012

Plate & Frame Filter

Proline Plate & Frame Filter

Superior quality 40 x 40 cm plate & frame filter, sanitary designed and constructed.

Specifications:

- Made of 304 stainless steel with Noril plates which are steam sterilizable.
- Three large view sight glasses with pressure gauges and sample valves.
- Three 1-1/2" butterfly valves and 3 piping design for better liquid flow.
- Large drip tray with ball valve for liquid recovery.
- Double filtration divider plate is installed on filter and included in price.
- Complete set up without pump, operation manual included.

Item	No. of Plate	Divider Plate	Pump	Size	Catalog	Price
20 Plate Proline Plate & Frame Filter 40x40 cm	20	Included	NO	40 x 40 cm	3410	\$4,695.00
30 Plate Proline Plate & Frame Filter 40 x 40 cm	30	Included	NO	40 x 40 cm	3411	\$5,395.00
40 Plate Proline Plate & Frame Filter 40 x 40 cm	40	Included	NO	40 x 40 cm	3412	\$5,695.00
Silicone Plates Gaskets for plate & frame 40x40 cm filter					3416A	\$5.00
Silicone End Plates Gaskets for plate & frame 40X40 cm filter					3416G	\$5.00
Noril Plates spare parts for plate & frame filter				40 x 40 cm	3416	\$69.00



© G.W. KENT, INC. March, 2012

Pico Jolly Plate & Frame Filter

Small filter, comes with 30 plates, size 20 x 20 cm. (8" square).

- Equipped with Noril filter plates that are steam sterilizable.
- Includes a 1/2 h.p. centrifugal pump, 110 V. 60 Hz. with 1-1/2" TC connection.
- Maximum pressure is 45 psi.
- Stainless steel frame on wheels, filters up to 300 gallons per hour.
- Double filtration divider plate included.
- Overall size: 34" L x 20" W x 26" H.

Item	Catalog	Price
Pico Jolly Filter	3406	\$1,995.00
1/2 h.p. Centrifugal Pump 1" NPTF (replacement pump)	3406B	\$275.00
20 cm x 20 cm Filter Plate (replacement plate)	3406C	\$45.00

Membrane Filter Housing

Pro-Line sanitary membrane filter housing for sterile filtration prior to bottling. Superior material and sanitary construction meets stringent beverage sterile filtration applications. Unsurpassed quality with great price. Complete set up, filter cartridge sold separately.

Features:

- Made of 316L stainless steel, electropolished
- Equipped with sanitary pressure gauge 1-1/2" TC
- Two butterfly valves and fittings are included with filter
- Equipped with two plunger valves for air bleed off
- Maximum Operating pressure 100 psi
- Fitted for code 7, 226 o-ring filter cartridge
- Filter housing has three stainless steel legs
- Triple to 12 cartridge housing with swing bolt design on base.
- Sterilization using in-line steam, autoclave or hot water



Item	Cartridge	Cartridge Length	Catalog	Price
Proline 10" Single Cartridge Filter Housing	1	10"	3421	\$595.00
Proline 20" Single Cartridge Filter Housing	1	20"	3422	\$695.00
Proline 30" Single Cartridge Filter Housing	1	30"	3407	\$795.00
Proline 30" Triple Cartridge Filter Housing	3	30"	3408	\$1295.00
Proline 30" Five Cartridge Filter Housing	5	30"	3409-1	\$1595.00
Proline 30" Seven Cartridge Filter Housing	7	30"	3409-2	\$1995.00
Proline 30" Eight Cartridge Filter Housing	8	30"	3409-3	\$2095.00
Proline 30" Twelve Cartridge Filter Housing	12	30"	3409-4	\$2495.00

Steam / Gas Membrane Filter

New design of sanitary membrane filter housing for steam and gas applications.

Features:

- Made of 316 L. stainless steel, electropolished.
- Inlet and outlet 1-1/2" TC.
- 1/4" NPT male connection on top and 1/4" NPT female on bottom.
- Maximum Operating pressure 150 psi @67° F
- Fitted for code 7, 226 filter cartridge.
- Valve and fitting is not included, please order separately.



5" steam / gas filter housing catalog #3452-1 \$495.00
 10" steam / gas filter housing catalog #3452-2 \$549.00

© G.W. KENT, INC. March, 2012

© G.W. KENT, INC. March, 2012

Pall Seitz Filter Sheets

Filter Sheets Pall/Seitz

Depth filters basically are a maze-like, extremely fine three-dimensional sieve with huge number of branched micro channels. They form a structure with a void volume of 70 - 85% of the total volume of the depth filter. This is indicative of the high dirt holding capacity, amount to almost 4 L/sq. m. of filter area. Pall/Seitz special manufacturing process provides a highly permeable void volume with a characteristic, very high dirt holding capacity. As a result the progressive differential pressure increase during filtration is slow, and the tendency for spontaneous blocking is practically eliminated. Pall / Seitz has been the leading supplier in the beverage industry providing the best in depth filtration. High wet strength, superior throughput capacity and excellent retention capabilities to remove micron and sub-micron particulates, like haze, yeast, bacteria and colloids yet preserves color, aromas and flavors.

* 10% discount apply to purchase of pallet quantity of 24 case.



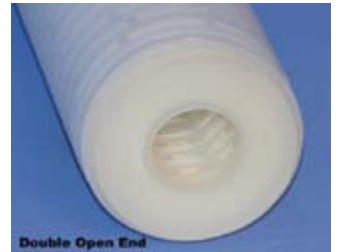
Item	Model	Particle Retention	Application	Size	Catalog	Price
T-1000 Pall/Seitz Filter Sheets	T-1000	10 - 25 micron	Coarse	40x40 cm	3427	\$179.00
K-700 Pall/Seitz Filter Sheets	K-700	7 - 15 micron	Coarse	40x40 cm	3430	\$159.00
K-300 Pall/Seitz Filter Sheets	K-300	6 - 12 micron	Coarse	40x40 cm	3431	\$159.00
K-250 Pall/Seitz Filter Sheets	K-250	5 - 9 micron	Medium	40x40 cm	3428	\$159.00
k-200 Pall/Seitz Filter Sheets	K-200	4 - 6 micron	Medium	40x40 cm	3432	\$159.00
K-150 Pall/Seitz Filter Sheets	K-150	3 - 4 micron	Fine	40x40 cm	3433	\$159.00
K-100 Pall/Seitz Filter Sheets	K-100	1 - 4 micron	Fine	40x40 cm	3434	\$159.00
KS-80 Pall/Seitz Filter Sheets	KS-80	0.8 - 2 micron	Fine	40x40 cm	3435	\$189.00
EK Pall/Seitz Filter Sheets	EK	0.5 - 0.7 micron	Sterile	40x40 cm	3436	\$209.00

Sil-Kleer Filter Media

A unique filter aid made from volcanic rock with stringently controlled process of removing grit and other foreign substances. The resulting filter aid is an extreme pure, inert, white, light weight material having a unique interlocking structure with myriads of microscopic channels. It affords optimum flow rate and sparkling clarity and does not impart taste, odor or color to filtered liquids. Sil-Kleer offers twice as much filtration, pound for pound, than diatomaceous earth. Users can realize substantial savings in filtration operations with a better filter aid at less cost. Sil-Kleer is safe, contains less than 0.1% silica (almost none) compared to D.E. with up to 60% silica. Sil-Kleer fits all pressure, vacuum and rotary filtration equipment with less equipment abrasion. Sil-Kleer can be easily disposed of, a non-hazardous waste. Ship via LTL common carrier.

Item	Grade	Catalog	Price
Sil-Kleer 27-M Filter Media	Fine filtration	3445	\$17.50
Sil-Kleer 23-S Filter Media	Coarse filtration	3446	\$17.50

Pall /Seitz Filter Cartridges



Item	Length	Particle Retention	Connection	Catalog	Price
Pall/SEITZ 30" MEMBRACart PSII Filter Cartridges	30"	0.45 micron	P7, 226 o-ring	3471-1	\$425.00
Pall/SEITZ 10" MEMBRACart PSII Filter Cartridges	10"	0.45 micron	P7, 226 o-ring	3471-2	\$149.00
Pall/SEITZ 30" PREcart PPII Filter Cartridge	30"	1 micron	P7, 226 o-ring	3472-1	\$295.00

Filter Cartridge

Beverage grade filter cartridge designed for beer, wine, bottled water and beverage pre-sterile and sterile filtration. To ensure microbial stability while maintaining quality, clarity, flavor and aroma. All filter cartridges have high dirt-loading capacity and wide chemical compatibility, produced in a state of the art clean room facility to meet demanding beverage industry requirements. Filter cartridges are re-usable, sterilizable with autoclave at 126 C. for one hour or in hot water 203 F. for 10 minutes and should be bubble point tested. Filtration area is 8.4 sq. ft. per 10 inch cartridge. Recommended change-out pressure for disposal is 35 psi.

** 10% discount apply to purchase of case quantity of 12 cartridge.*



Beverage grade Sterile Cartridge for Bottling	Length	Particle Retention	Connection	Catalog	Price
0.2 micron Polyethersulfone Filter Cartridge 10"	10"	0.2 micron	P7, 226 o-ring	3475-9	\$95.00
0.2 micron Polyethersulfone Filter Cartridge 20"	20"	0.2 micron	P7, 226 o-ring	3475-8	\$169.00
0.2 micron Polyethersulfone Filter Cartridge 30"	30"	0.2 micron	P7, 226 o-ring	3475-2	\$279.00

Beverage grade Sterile Cartridge for Bottling	Length	Particle Retention	Connection	Catalog	Price
0.45 micron Polyethersulfone Filter Cartridge 10"	10"	0.45 micron	P7, 226 o-ring	3475-5	\$95.00
0.45 micron Polyethersulfone Filter Cartridge 20"	20"	0.45 micron	P7, 226 o-ring	3475-7	\$165.00
0.45 micron Polyethersulfone filter Cartridge 30"	30"	0.45 micron	P7, 226 o-ring	3475-4	\$259.00
226 O-Ring for Filter Cartridge				3475A	\$3.50

Beverage grade Sterile Cartridge for Bottling	Length	Particle Retention	Connection	Catalog	Price
0.45 Micron Polyethersulfone Filter Cartridge 10"	10"	0.45 micron	Double open end	3476-1	\$89.00
0.45 Micron Polyethersulfone Filter Cartridge 20"	20"	0.45 micron	Double open end	3476-2	\$139.00
0.45 Micron Polyethersulfone Filter Cartridge 30"	30"	0.45 micron	Double open end	3476-3	\$249.00

Beverage grade Pre-filter Cartridge for Bottling	Length	Particle Retention	Connection	Catalog	Price
1 micron Polypropylene Filter Cartridge 10"	10"	1 micron	P7, 226 o-ring	3474-9	\$49.00
1 micron Polypropylene Filter Cartridge 20"	20"	1 micron	P7, 226 o-ring	3474-8	\$99.00
1 micron Polypropylene Filter Cartridge 30"	30"	1 micron	P7, 226 o-ring	3474-2	\$129.00

Beverage grade Pre-filter Cartridge for Bottling	Length	Particle Retention	Connection	Catalog	Price
5 micron Polypropylene Filter Cartridge 10"	10"	5 micron	P7, 226 o-ring	3474-5	\$49.00
5 micron Polypropylene Filter Cartridge 20"	20"	5 micron	P7, 226 o-ring	3474-3	\$99.00
5 micron Polypropylene Filter Cartridge 30"	30"	5 micron	P7, 226 o-ring	3474-4	\$129.00

Beverage grade Pre-filter Cartridge for Bottling	Length	Particle Retention	Connection	Catalog	Price
10 micron Polypropylene Filter Cartridge 10"	10"	10 micron	P7, 226 o-ring	3474-11	\$49.00
10 micron Polypropylene Filter Cartridge 20"	20"	10 micron	P7, 226 o-ring	3474-10	\$99.00
10 micron Polypropylene Filter Cartridge 30"	30"	10 micron	P7, 226 o-ring	3474-6	\$129.00

Beverage grade Pre-filter Cartridge for Bottling	Length	Particle Retention	Connection	Catalog	Price
1 Micron Polypropylene Filter Cartridge 10"	10"	1 micron	Double open end	3476-8	\$35.00
1 Micron Polypropylene Filter Cartridge 20"	20"	1 micron	Double open end	3476-7	\$64.00
1 Micron Polypropylene Filter Cartridge 30"	30"	1 micron	Double open end	3476-6	\$97.00



Indoor Glycol Chillers

Complete chiller for indoor installation, reliable and energy efficient.

Portable 1 ton Glycol Chiller

Features:

- Air condensed refrigeration circuit
- 1 ton capacity
- Hot gas bypass capacity control
- 1-phase, 230V. 60 Hz
- Includes 1/2 hp. pump (2.4 gpm @ 60 psi) and 4 gallon tank
- Stainless steel enclosure panels
- Water in & out connection is 1/2" NPT
- Measure 18" x 24" x 33" H.

Catalog #307-01 \$4895.00



Portable 5 ton Glycol Chiller

Features:

- Air condensed refrigeration circuit
- Normal BTU/H 60,000. single phase, 230V. (3-phase special order only)
- Scroll compressors
- Hot gas bypass capacity control
- Includes 2 HP pump (48 gpm @ 48 psi) and 25 gallon insulated polyethylene tank
- Portable Indoor designed
- Automatic low flow bypass valve
- Automatic electric water make up system
- Thermoformed ABS control panel and microprocessor instrument
- 1 year warranty.
- Dimension 34" W x 42" L x 60" H

Catalog #307-05P \$12,595.00

Outdoor Glycol Chillers

Designed for fermentation temperature control. Outdoor chiller designed to re-circulate clean fluid (water and glycol) to maintain the set temperature, which consists of a condensing unit, heat exchanger and controls built into a cabinet. All models include an insulated tank and two pumps. Chiller is ETL listed and made in America.

Specifications:

Design conditions:

34° F. - Leaving water Temp.

44° F. - Enter water Temp.

Ambient Design: 90°F.

Refrigeration:

Factory charge with Ozone friendly R-404A

Liquid line enhanced Filter dryer.

Sight glass with moisture indicator

Thermal expansion valves. High/low pressure safety switches.

Condensing Unit:

Coils are constructed of copper tubing with aluminum fins for durability.

Top discharge allows warm air to be exhausted away from work area.

Fan motor qualified for outdoor operation

Compressor includes five year limited factory warranty.

Glycol Chiller



Item	Power	BTU	Insulated Tank	Two Pumps	Refrigeration	Catalog	Price
3 ton Chiller	1-phase 208-230V	36000 BTU	50 gallon	1 hp. & 1-1/2hp.	404A	307-03	\$11,995.00
5 ton Chiller	1-phase 208-230V	60000 BTU	50 gallon	1 hp. & 1-1/2 hp.	404A	307-05A	\$14,595.00
5 ton chiller	3-phase 208-230V	60000 BTU	50 gallon	1 hp. & 1-1/2 hp.	404A	307-05	\$14,595.00
7-1/2 ton chiller	3-phase 208-230V	90000 BTU	50 gallon	1 hp. & 1-1/2 hp.	404A	307-07	\$15,695.00
10 ton chiller	3-phase 208-230V	120000 BTU	75 gallon	2 hp. & 2 hp.	404A	307-10	\$20,950.00
20 ton chiller	3-phase 208-230V	240000 BTU	300 gallon	2 hp. & 2 hp.	404A	307-20	\$37,950.00

Temperature Controllers

Johnson Controls A419 Tank Temperature Controller

Tank temperature controller is single stage electronic temperature control with a single-pole, double-throw output relay. Controller with NEMA 1 enclosure and feature a lockable front-panel touchpad for set up and adjustment and a liquid crystal display for viewing.

Features:

- Supply voltage: 120 or 240 VAC
- Range: -30°F to 212° F (-34 to 100° C)
- Power Consumption: 1.8 VA max. Easy to ready front panel liquid crystal display.
- Wide temperature differential adjustment range 1 to 30°F. or C. Adjustable anti-short cycle delay.
- Switch-activated temperature offset function.
- High impact thermoplastic NEMA 1 enclosure.. Lockable front panel touchpad.

Catalog #6034 \$64.00



Johnson Controls Digital Thermostat Controller

Sturdy compact electronic thermostat, designed to override on-board refrigerator thermostats and provide accurate temperature control outside the range of the on-board thermostat. Applications includes control of cooler and freezers.

Features:

- Temperature Range: - 30° to 220° F.
- 6 ft. extension cord with plug. Easy-to-read LCD display
- Easy to configured cooling applications.
- 6.5 ft. sensor leads. Lockable front panel touchpad
- Voltage 120V / 240 V. input. Enclosure Type: NEMA 1. Differential 1° to 30° F.

Catalog #2441 \$79.00



Johnson Controls Manual Thermostat Controller

Easy to use and easy to install 110 V. thermostat control, include 8'cord with sensor. A single-stage cooling controls with single pole, single-throw switches that open on temperature drop. Designed to override on-board refrigerator thermostats and provide accurate temperature control outside the range of the on-board thermostat.

Features:

- Temperature Range: - 30° to 220° F.
- Operating Temp. Range: - 20° to 140° F.
- Voltage 120V / 240 V. input. Enclosure Type: NEMA 1
- Stages: one. Resistive 15 A / 8A. Differential 1° to 30° F.

Catalog #2444 \$59.00



Ranco Temperature Control

Easy to use and easy to install 110 V. controls for tank temperature control, includes 8'cord with sensor. Electrical cable is not included.

Features:

- Temperature Range: - 30° to 220° F.
- Operating Temp. Range: - 20° to 140° F.
- Voltage 120V / 240 V. input
- Enclosure Type: NEMA 1
- Stages: one. Resistive 15 A / 8A
- Differential 1° to 30° F.

Catalog #6035 \$75.00



© G.W. KENT, INC. March, 2012

G.W. Kent Temperature Controller

Easy to use and easy to install tank temperature controller for every tank.

Features:

- Microprocessor based temperature controller for tank cooling and heating control .
- 24 V. DC power supply
- New improved model with display of tank temperature and set value temperature
- Sanitary designed for beverage and food processing, water-tight and can withstand humidity and harsh environment
- New design with stainless hook and 12 ft. of cable and sensor, controller can be placed in an easy to reach area and simply place sensor in thermometer well
- Easy switch from C to F reading. Password protection for access

Catalog #6039 \$99.00



Solenoid Valves



Large flow, two-way solenoid valve with reliable action. End connection is female NPT.

- Power: 24V or 110 V.
- Operating temperature -40° to 175° F.
- Operating pressure 0 - 90 psi.
- Normal closed 0 - 140 psi
- Normally open 0- 80 psi

Stainless Steel Solenoid Valve	Power	Catalog	Price
Solenoid Valves 3/4" NPT stainless	24V DC	6038-8	\$85.00
Solenoid Valves 1" NPT stainless	24V DC	6038-9	\$95.00
Solenoid Valves 3/4" NPT stainless	110V AC	6038-8A	\$85.00
Solenoid Valves 1" NPT stainless	110V AC	6038-9A	\$95.00

Brass Solenoid Valve	Power	Catalog	Price
Solenoid Valves 3/4" NPT Brass	24V DC	6036-2	\$69.00
Solenoid Valves 1" NPT Brass	24V DC	6036-3	\$79.00
Solenoid Valves 3/4" NPT Brass	110V AC	6036-2A	\$69.00
Solenoid Valves 1" NPT Brass	110V AC	6036-3A	\$79.00

Motorized Valves



Two-way motorized ball valves to control cool/hot water flow.

- 110V. AC power and NPT female connection.
- Operating Temperature: - 10° C to +180° C.

Item	Catalog	Price
3/4" NPT Motorized Ball Valve	6031-5	\$109.00
1" Motorized Ball Valve	6031-6	\$129.00

Two-way motorized valves are used to control the cool/hot water flow through the fan coil units. When a thermostat sends the controlling signal to the motorized valve the valve is opened and closed with internal spring. 24 V. AC power supply.

Item	Catalog	Price
1/2" NPT Motorized Ball Valve	6031-3	\$49.00

Sanitary Pressure Gauge

Features:

- Ideal for CIP or equipment washdown
- Meets 3-A sanitary standards, all 316L stainless steel
- Glycerine filled with polycarbonate glass. 2% accuracy

Item	Mounting	Connection	Dial Face	Catalog	Price
0-30 psi Sanitary Pressure Gauges	Bottom	1.5" TC	2.5"	2724-6	\$99.00
0-60 psi Sanitary Pressure Gauges	Bottom	1.5" TC	2.5"	2724-7	\$99.00
0-150 psi Sanitary Pressure Gauges	Bottom	1.5" TC	2.5"	2724-8	\$99.00
0-30 psi Sanitary Pressure Gauges	Back	1.5" TC	2.5"	2723-2	\$149.00
0-60 psi Sanitary Pressure Gauges	Back	1.5" TC	2.5"	2723-3	\$149.00



Digital Sanitary Pressure Gauges

Designed specifically for monitoring critical pressure applications in food and beverage industries. Meets 3-A sanitary standard.

Specifications:

- Accuracy: +0.2% Complies with ASME B40.7-1998
- Repeatability: + 0.06%
- Process Temp: 25° to 260° F (-4° to 127° C)
- Display: LCD with 0.9" height.
- 1-1/2" Tri-clamp connection. 2" TC available with special order.
- Rated: NEMA 4X for wash-down
- User programmable via simple operator interface.
- 2 year warranty.

Digital Pressure Gauge	Pressure Switch	Catalog	Price
0 - 30 psi Digital Pressure Gauge	No	2726-1	\$650.00
0 - 60 psi Digital Pressure Gauge	No	2726-2	\$650.00
0-30 psi Digital Pressure Gauge	Included	2726-5	\$845.00
0 - 60 psi Digital Pressure Gauge	Included	2726-6	\$845.00



Pressure Gauges

General processing pressure gauges with stainless steel case and

- Dial face 2.5" with glycerine filled..
- Polycarbonated lens, brass internal.
- Connection: 1/4" NPT male.
- Accuracy : +/-2%.
- Dural scale: C & F

Item	Pressure	Mounting	Catalog	Price
0-30 psi Pressure Gauge	0 - 30 psi	Bottom mount	2725-6	\$14.00
0-60 psi Pressure Gauge	0 - 60 psi	Bottom mount	2725-7	\$14.00
0-30 psi Pressure Gauge	0 - 30 psi	Back mount	2725-8	\$14.00
0-60 psi Pressure Gauge	0 - 60 psi	Back mount	2725-9	\$14.00



© G.W. KENT, INC. March, 2012

Quick Disconnects

Designed for general purpose hydraulic service, suitable for use with liquids, gas and vacuum. Available in 304 stainless steel or brass. Quick disconnect's socket and plug end are NPT female and seal EPDM. Two piece (socket & plug) sold as set.

Stainless Steel Quick Disconnects	Catalog	Price
Quick Disconnects 1/4" NPT	6032-6	\$59.00
Quick Disconnects 3/8" NPT	6032-7	\$69.00
Quick Disconnects 1/2" NPT	6032-8	\$79.00
Quick Disconnects 3/4" NPT	6032-9	\$99.00
Quick Disconnects 1" NPT 304	6032-1	\$149.00

Brass Quick Disconnects	Catalog	Price
Quick Disconnects 1/4" NPT	6033-1	\$27.00
Quick Disconnects 3/8" NPT	6033-2	\$30.00
Quick Disconnects 1/2" NPT	6033-3	\$42.00
Quick Disconnects 3/4" NPT	6033-4	\$59.00
Quick Disconnects 1" NPT	6033-5	\$79.00



CIP System

Complete CIP system mounted on cart with wheels for mobility. Efficient CIP system, designed to save time and cleaning chemical usage. Dual tank for cleaner and sanitizer, tank capacity is 50 gallons with built in electric heater for caustic application. Tanks, valves and piping is made of 316 stainless steel. Cart is made of 304 stainless steel. CIP pump is not included. Measurement 59" x 24" x 63"H Tank diameter 23" x 27"

Catalog #2538 - \$7,400.00



Sterox Cleaning Powder

A non-foaming, chlorine free, alkaline powder containing active oxygen, phosphates and additives. Formulated specially for use in beverage and food processing plants for cleaning, bleaching & deodorizing tanks, equipment and production area. Packing 50 lb.

Advantages:

- 4 in 1 action cleaning ability, antibacterial, bleaching and deodorizing
- Non chlorine with active oxygen, good solubility and no foaming, no fragrance and no odor
- Remove fermentation residues. Energy efficient, does not require hot water

Method of use: concentration between 0.5% to 1.5% depending on application, circulate for 15 minutes. Rinse with clean water

Sterox Catalog #4561 \$95.00 / 33 lb. pail
 Sterox Phosphate Free Catalog #4562 \$100.00 / 33 lb. pail

Chlorinated TSP Cleaner

Free flowing pink powder that contains chlorine has cleaning, disinfecting and deodorizing properties. This product is non-corrosive to stainless steel or rubber. A good cleaner for tank, equipment, conveyor, tools, floor and processing area.

- Method of use: Use at concentration between 0.5% to 1.5% depending on application (1 Tsp per gallon of water), circulate for 5 - 10 minutes. Rinse thoroughly with clean water.

Catalog #4598 \$100.00 / 50 lb. bag

© G.W. KENT, INC. March, 2012

Wash Down Station

Strahman Wash Down / Mixing Station

Wash down mixing units and hose stations for hot and cold water are designed to thoroughly mix hot and cold water in any desired proportion. A reliable cleaning tool for food and beverage processing industries, where fast and effective cleanup is necessary. Made of bronze, equipped with a dial type gauge that accurately indicates the wash water's temperature, also features a specially designed blending chamber for hot and cold water blending. Wall-mounted design, with maximum operating temperature 200 F and maximum working pressure 150 psi. Washdown hose and spray nozzle are not included.

Catalog #2537 \$1095.00

Strahman M70 Spray Nozzle

Strahman spray nozzle M-70 for Wash down mixing units-hose stations. Combines modern & innovative engineering with premium quality parts to build hose nozzles strong enough for industrial and food applications.

Features:

- Maximum recommended operating temperature 200 F
- Maximum working pressure 150 psi
- Flowrates: 5 -7 gpm under normal conditions (50 - 80 psi) or 10 gpm at 150 psi
- Hose adaptor and Swivel pro for hose is not included, available for purchase.

Catalog #2537A \$139.00

Strahman Hydro-Pro M150 Spray Nozzle

Heavyweight performance in a light weight design, and constructed with a stainless steel housing but weighs less than 2 lb and is ergonomically designed to reduce user fatigue. Features a locking trigger mechanism to lock in a desired spray pattern.

Features:

- Maximum recommended operating temperature 200 F
- Maximum working pressure 150 psi
- Flowrates: 5 -7 gpm under normal conditions (50 - 80 psi) or 10 gpm at 150 psi

Catalog #2540 \$225.00

Swivel Hose Adaptor

For connection to spray nozzle to prevent hose kinks, made of stainless steel.

1/2" Swivel Hose Adaptor Catalog#2537F \$105.00

3/4" Swivel Hose Adaptor Catalog #2537B \$110.00

Garden Hose Adaptor

304 stainless steel hose adaptor for connection to spray nozzle.

Fits washdown hose 3/4" ID.

Catalog #2537C \$19.50

Wall-mounted Hose Racks

304 stainless steel wall-mounted hose racks help keep hose neatly coiled and in place.

Catalog #7966 \$165.00



© G.W. KENT, INC. March, 2012

© G.W. KENT, INC. March, 2012

Washdown Hose

Goodyear Sani-Wash Food Washdown Hose

An economical hose for hot water washdown up to 200°F cleanup in food processing plants, winery, brewery, dairies, packing houses, and bottling plants. Price is for 50 ft. length. Special order for 100 ft or longer length.

CONSTRUCTION:

- TUBE: Versigard® synthetic rubber
- COVER: White Versigard® synthetic rubber with Microban® product protection
- REINFORCEMENT: Spiral textile reinforced
- TEMPERATURE: -40°F to 200°F (-40°C to 93°C)



Item	I.D.	O.D.	Pressure Rating	Catalog	Price
1/2" Good Sani-Wash Hose	1/2"	0.84"	300 psi max	7965	\$95.00 / 50 ft. coil
3/4" Goodyear Sani-Wash Hose	3/4"	1.17"	300 psi max	7968	\$125.00 / 50 ft coil
1" Goodyear Sani-Wash Hose	1"	1.47"	300 psi max.	7969	\$169.00 / 50 ft coil

Goodyear Fortress Food Washdown Hose

High quality construction for hot water up to 200 degree F. Hose incorporates Microban's anti-microbial built-in protection. ID 3/4" x OD 1.188" and sold in coil of 50 ft.

- Construction: Black Chemigum synthetic rubber tube with spiral synthetic yarn
- Cover is made of yellow carbryn synthetic rubber, RMA (high oil resistance) with microban protection
- Temperature: -20° F. to 200° F
- Maximum working pressure 300 psi

Catalog #7967 \$245.00 / 50 ft. coil



Hose Cleaning Sponge Ball

Item	Catalog	Price
3/8" Hose Cleaning Sponge Ball	306-01	\$1.00
1/2" Hose Cleaning Sponge Ball	306-02	\$1.00
3/4" Hose Cleaning Sponge Ball	306-03	\$1.50
1" Hose Cleaning Sponge Ball	306-10	\$3.00
1-1/2" Hose Cleaning Sponge Ball	306-15	\$3.75
2" Hose Cleaning Sponge Ball	306-20	\$4.75
3" Hose Cleaning Sponge Ball	306-30	\$9.50



Hose Splicer

Stainless steel small diameter hose splicer for hose connection.

Item	Catalog	Price
Hose Splicer 3/8" x 3/8"	824-1	\$5.00
Hose Splicer 1/2" x 1/2"	824-2	\$5.00
Hose Splicer 1/4" x 1/2"	824-3	\$5.00
Hose Splicer 1/4" x 3/8"	824-4	\$5.00
Hose Splicer 3/8" x 1/2"	824-5	\$5.00



Food Grade Lubricant & Cleaner

Food Grade Machine Oil Spray

A heavy duty sanitary lubricant with high load bearing, low friction properties. This sanitary lubricant is highly resistant to separation or bleed. It will not dry or gum on equipment. It provides a protective coating to all metal parts despite moisture.



- Conform to NSF HI for use in food processing plants.
- All ingredients are FDA approved.
- Colorless, odorless and non toxic.
- Non staining, lubricant, spray upright or inverted. 11.25 oz. Spray
- Applications: beverage equipment, pumps, kegs, bottling equipment, valves, gasket & seals.

Catalog #4555 \$14.50



Food Grade Silicone Spray

A heavy duty sanitary spray lubricant that minimizes cleanup time and sticking problem on food packaging and processing equipment. This versatile lubricant can be used as an anti-rust film on equipment.

- Conform to NSF HI for use in food processing plants.
- All ingredients are FDA approved.
- Colorless, odorless and non toxic.
- Non staining, lubricant, spray upright or inverted. 11.25 oz. Spray
- Applications: grain mills, filling machines, pumps, valves and fittings.

Catalog #4558 \$16.50



Food Grade Stainless Steel Cleaner

Features:

- USDA C-1 rated, NSF listed
- Water based emulsion, clean & shine
- Invisible coating resists fingerprints & watermarks
- Resists Corrosion
- 14 oz. spray can.

Catalog #4556 \$8.95



Food Grade Lubricant

A heavy duty sanitary lubricant with extended performance, low friction properties. This lubricant is designed for longer lubrication intervals, eliminating downtime to re-lubricate the equipment. This lubricant wears evenly on all moving parts, preventing metal to metal contact and equipment damage. It will not dry or gum on the equipment and is highly resistant to separation or bleed.

- Conform to NSF HI for use in food processing plants.
- All ingredients are FDA approved.
- Applications: beverage equipment, pumps, kegs, bottling equipment, valves, gasket & seals.

Catalog #4557 \$4.50 / 4 oz. tube



Food Grade Lubricant Cartridge

A heavy duty sanitary lubricant with high load bearing, low friction properties. It provides a protective coating to all metal parts despite moisture.

- Conform to NSF HI for use in food processing plants.
- All ingredients are FDA approved.
- 12 oz. cartridge to fit grease gun.

Catalog #4560 \$12.50 / 12 oz. cartridge.

Food Grade Silicone Oil

Silicone Oil is a sanitary spray lubricant, it minimizes cleanup time and sticking problems on food/ beverage packaging and processing equipment. It can be used as a release agent on plastic/rubber parts. This versatile lubricant can be used as an anti-rust film on equipment.

- Conform to NSF HI for use in food processing plants.
- All ingredients are FDA approved.

Catalog #4565 \$149.00 / 1 gallon jar

Food Grade Machine Oil

A light duty sanitary oil lubricant for all food & beverage processing machine parts. Food grade machine oil contains no animal or vegetable fats and is absolutely neutral. It will not turn rancid, contaminate or taint food products.

- Conform to NSF HI for use in food processing plants.
- All ingredients are FDA approved.
- Odorless, tasteless, colorless and non-toxic.

Catalog #4566 \$129.00 / 2.5 gallon jar.

© G.W. KENT, INC. March, 2012

© G.W. KENT, INC. March, 2012

Hygienic Tools

Lightweight & sturdy, hygienically designed for food and beverage industry. Injection molded white color polypropylene or nylon, meets FDA and USDA requirements. Chemical & corrosion resistant, tolerates temperature - 22F to 176 F.

Ergonomic Hand Brush

Ergonomic hand brush designed to fit your hand and the job at hand for maximum efficiency and manufactured for durability. Spread angle bristles, 5" x 13.5".

Catalog #298-10 - \$27.00



Hygienic Floor & Wall Brush with handle

For the most demanding, aggressive cleaning project, floor & wall scrubs. Brush 2.5" x 19" with stiff polyester bristles and 68" long handle.

Catalog #298-11 - \$99.00



Hygienic Hoe with handle

Hoe 8" x 11" with screw on handle, handle length 68".

Catalog #298-2 - \$99.00

Hygienic Rake with handle

Rake 7.5" x 8" with screw on handle, handle length 68".

Catalog #298-3 - \$99.00

Hygienic Fork with handle

Blade 10.5" & length 49" with molded handle.

Catalog #298-4 - \$95.00

Hygienic Telescopic Handle

Handle length 62" mm and 113" max.

Catalog #298-15 - \$69.00



Hygienic Sieve Shovel with handle

Ergonomic design reduces strain when bending and lifting. Blade 13.5" x 51". Slot size is 0.5" x 3" allowing liquid to drain.

Catalog #298-5 - \$79.00

Hygienic large Blade Shovel with handle

Ergonomic design shovel, blade 13.5" x 51".

Catalog #298-6 - \$85.00

Hygienic Paddle

One-piece injection molded paddle scraper with handle. Pade blade 6" x 13" and length 52".

Catalog #298-7 - \$69.00

Hygienic Tank Brush with handle

Tank brush 5.5" x 8" with polyester bristles and 68" long handle.

Catalog #298-9 - \$99.00

Hygienic Squeegees with handle

Ultra hygiene squeegees with one-piece design and co-molded construction united to make the smoothest and cleanest tool available. Rugged body and ultra-hygienic design with squeegees length of 28" Autoclavable at temperature up to 212 F. and double splash guard for push or pull application.

Catalog #298-13 - \$99.00

Food Grade Transfer Hose

GoodYear Vintner Hose

Goodyear Vintner hose has been designed to handle in-plant and or tank transfer of wine, beer, water and other non-oily liquid food stuffs. Hose sold in 100 ft. coil without any fitting or pre-cut length with hose adaptor assembed & crimp on two end of hose.

Construction:

- Tube: White chlorobutyl rubber (FDA, USDA, 3-A compliance)
- Reinforcement: Multiple textile piles/internal polyester monofilament Helix
- Cover: Grey Versigard wrapped cover, purple branding tape
- Length: 100 ft. (or cut hose in any 10 ft. increment, cut hose is not returnable.)
- Temperature: -30 F to 220 F (for steam cleaning)
- Vacuum up to 27" Hg.
- Pre-cut hose assembled with 316 stainless steel hose adaptor assembled and crimped on both ends of hose. Ready for service.



Pre-cut hose with 2 hose adaptors	Hose I.D.	Length	Hose Adaptor Size	Pressure Rating	Catalog	Price
Goodyear Vintner Hose	1"	10 ft.	1" TC	250 psi max.	710-10	\$369.00
Goodyear Vintner Hose	1"	15 ft	1" TC	250 psi max.	710-15	\$449.00
Goodyear Vintner Hose	1"	20 ft	1" TC	250 psi max.	710-20	\$529.00
Goodyear Vintner Hose	1"	30 ft	1" TC	250 psi max.	710-30	\$669.00

Pre-cut hose with 2 hose adaptors	Hose I.D.	Length	Hose Adaptor Size	Pressure Rating	Catalog	Price
Goodyear Vintner Hose	1.5"	10 ft.	1.5" TC	250 psi max.	715-10	\$369.00
Goodyear Vintner Hose	1.5"	15 ft	1.5" TC	250 psi max.	715-15	\$469.00
Goodyear Vintner Hose	1.5"	20 ft	1.5" TC	250 psi max.	715-20	\$549.00
Goodyear Vintner Hose	1.5"	30 ft	1.5" TC	250 psi max.	715-30	\$699.00
Goodyear Vintner Hose	1.5"	40 ft.	1.5" TC	250 psi max.	715-40	\$899.00
Goodyear Vintner Hose	1.5"	50 ft.	1.5" TC	250 psi max.	715-50	\$1049.00

Pre-cut hose with 2 hose adaptors	Hose I.D.	Length	Hose Adaptor Size	Pressure Rating	Catalog	Price
Goodyear Vintner Hose	2"	20 ft	2" TC	250 psi max.	720-20	\$649.00
Goodyear Vintner Hose	2"	30 ft	2" TC	250 psi max.	720-30	\$849.00
Goodyear Vintner Hose	2"	40 ft.	2" TC	250 psi max.	720-40	\$1049.00
Goodyear Vintner Hose	2"	50 ft.	2" TC	250 psi max.	720-50	\$1249.00

Vintner Hose in 100' coil

Full coil hose without fittings	I.D.	O.D.	Pressure Rating	Catalog	100 ft. coil, price per boot
1" Goodyear Vintner Hose	1"	1.6"	250 psi max.	79-10	\$13.95 / ft.
1-1/2" Goodyear Vintner Hose	1.5"	2.1"	250 psi max.	79-15	\$15.95 / ft.
2" Goodyear Vintner Hose	2"	2.7"	250 psi max.	79-20	\$16.95 / ft.
3" Goodyear Vintner Hose	3"	3.9"	250 psi max.	79-30	\$21.95 / ft.

GoodYear Nutriflo Hose

Goodyear Nutriflo suction & discharge hose for handling almost every type of dry bulk food material or liquid in gravity flow and vacuum service.

Construction:

- Tube: Clear Pliovic (FDA, 3-A, USDA compliant)
- Reinforcement: High density pliovic helix. Cover: Clear pliovic
- Length: 100 ft. (or cut hose in any 10 ft. increment, cut hose is not returnable).
- Temperature: 15 F to 150 F



Cut hose is not returnable

Please allow 2 - 3 extra days for cut hose.

Item	I.D.	O.D.	Pressure Rating	Catalog	Price per ft.	100 ft. coil price
3/4" Goodyear Nutriflo	3/4"	1"	115 psi max.	792-34	\$2.50	\$2.00 / ft.
1" Goodyear Nutriflo Hose	1"	1.2"	106 psi max.	792-10	\$3.50	\$3.00 / ft.
1-1/2" Goodyear Nutriflo Hose	1.5"	1.7"	89 psi max.	792-15	\$3.95	\$3.25 / ft.
2" Goodyear Nutriflo Hose	2"	2.4"	79 psi max.	792-20	\$5.50	\$4.75 / ft.
3" Goodyear Nutriflo Hose	3"	3.5"	65 psi max.	792-30	\$7.75	\$7.00 / ft.

Goodyear Pliovic Hose

Goodyear Pliovic hose is clear reinforced tubing for the food & beverage industries. Designed for discharge, can't handle suction.

Construction

- Tube: Clear Pliovic conforms to FDA, 3-A, & USDA
- Reinforcement: Spiral synthetic yarn
- Cover: Clear Pliovic
- Length: 100 ft. (or cut hose in any 10 ft. increment, cut hose is not returnable.)
- Temperature: 15 F to 150 F



Cut hose is not returnable

Please allow 2 - 3 extra days for cut hose.

Item	I.D.	O.D.	Pressure Rating	Catalog	Price
1/4" Goodyear Pliovic Hose	1/4"	0.4"	250 psi max.	794-14	\$0.65
3/8" Goodyear Pliovic Hose	3/8"	0.6"	250 psi max.	794-38	\$0.75
1/2" Goodyear Pliovic Hose	1/2"	3/4"	200 psi max.	794-12	\$0.95
3/4" Goodyear Pliovic Hose	3/4"	1"	150 psi max.	794-34	\$1.45
1" Goodyear Pliovic Hose	1"	1.3"	125 psi max.	794-10	\$1.75

FDA Rubber Hose

FDA-approved EPDM rubber hoses are designed to transport beverage without imparting odor or taste. Machine fabricated assemblies of hose with tri-clamp hose barb and sleeve in stainless steel, suitable for high temperature, high pressure and demanding sanitary applications.

Construction:

- Internal Wall: Seamless White EPDM
- Cover: EPDM Rubber (Abrasion and oil resistant)
- Reinforcement: Two polyester spirals with dual helix wire
- Temperature: -40 F to 300 F



Item	I.D.	O.D.	Pressure Rating	Catalog	Price per ft.	Hose barb on 2 ends
1" FDA Rubber Hose	1"	1.5"	150 psi max.	795-10	\$25.00	add \$300.00
1-1/2" FDA Rubber Hose	1.5"	2.04"	150 psi max.	795-15	\$29.00	add \$300.00
2" FDA Rubber Hose	2"	2.6"	150 psi max.	795-20	\$32.00	add \$350.00

Beverage Flexible Vinyl Tubing

Vinyl tubing, a non-toxic, FDA approved formulation can be used in laboratories, food processing, beverage line and dairy applications.

Full coil hose without fittings	I.D.	O.D.	Catalog	100 ft. coil
1/4" Beverage Clear Vinyl Tubing	1/4"	3/8"	2414	\$16.50
3/8" Beverage Clear Vinyl Tubing	3/8"	1/2"	2415	\$19.50
5/16" Beverage Clear Vinyl Tubing	5/16"	7/16"	2416	\$19.50
1/2" Beverage Clear Vinyl Tubing	1/2"	5/8"	2417	\$24.50
3/4" Beverage Clear Vinyl Tubing	3/4"	1"	2418	\$65.50



Hose Clamps

Stainless steel hose clamp.

Item	Fit Hose Size	Catalog	Price
1-1/4" Hose Clamp	1"	82-72	\$1.50
1-1/2" Hose Clamp	1" - 1-1/4"	82-73	\$1.50
2" Hose Clamp	1-1/2"	82-74	\$2.50
3" Hose Clamp	2-1/2"	82-75	\$2.50
3-1/2" Hose Clamp	3"	82-76	\$2.75
4-1/2"	4"	82-77	\$3.00



Refractometers

Refractometer for measuring sugar content with automatic temperature compensation 10 - 30 degree C. No tools needed for calibration, ideal for field work. Premium quality and best price. Packed in protective plastic case.

Item	Range	Resolution	Accuracy	Catalog	Price
Refractometer for Juice	0 - 32% Brix	0.2%	+/- 0.2%	2727	\$39.00
Hi_Brix Refracometer	28 - 62%	0.2%	+/- 0.2%	2728	\$39.00
Refractometer - Alcohol	0 - 25% vol. 0 - 40% Brix	0.2% vol. & Brix	+/- 0.2%	2729	\$39.00

Atago PAL 1 Pocket Digital Refractometer

Light & compact for field application, with automatic temperature compensation. high water resistance.

System: Optical refraction critical angle detection.

Features:

- Range: Brix 0.0-53.0%
- Resolution: 0.1%
- Accuracy: +/- 0.2%
- Temp Comp: 10 - 40C
- Measuring Time: 2 seconds

Catalog #2733 - \$295.00



Hanna Refractometer

Best valued digital brix refractometer. Easy measurement, just place a few drops of the sample in the well and press the READ key.

Specifications:

- Range: 0.0-50.0% Brix
- Resolution: 0.1% Brix.
- Accuracy: +0.2% Brix.

Catalog #2732 \$175.00

Features:

- 1.5 second measurement time.
- Automatic temperature compensation (ATC).
- Easy set up and storage. Battery operated.



© G.W. KENT, INC. March, 2012

© G.W. KENT, INC. March, 2012

ph Meters & Magnetic Stirrer

pH Meter Hanna HI 224B

Benchtop pH meter designed for the beer industry, has data logging and downloading capability. Graphic display of electrode response time on LCD. Automated 2 point calibration for enhanced accuracy.

Supplied with:

- Refillable pH electrode with glass-body.
- Stainless steel temperature probe.
- pH 4 and pH 7 buffer sachets.

Catalog #2730 - \$525.00



Portable pH meter for Brewing

For testing pH in brewing water, mashing, wort and fermentation activity. Portable pH meter is waterproof, automatic temperature compensation and electrode with internal temperature sensor. HI 99151

- Range pH: -2.0 to 16.00
- Range Temp. : 23 - 221 F
- Resolution pH: 0.1 pH
- Resolution Temp. : 0.1 F
- Accuracy: 0.2 pH & Temp +/-2F
- pH Calibration: Automatic
- Temperature : Automatic compensation

Catalog #2609 - \$295.00



pH tester pHEP 5

Waterproof tester for pH measurement with replaceable electrode and stainless steel temperature probe for fast and precise measurements. Dual-level LCD display simultaneous display of measurement reading & temperature. HI 98128

- Range pH: -2.00 to 16.00 pH
- Range Temperature: 23.0 to 140.0°F
- Resolution pH: 0.01 pH
- Resolution Temperature: 0.1°F
- Accuracy pH: ±0.05 pH
- Accuracy Temperature: ±1°F
- pH Calibration: automatic
- Temperature: automatic compensation

Catalog #2614 - \$99.00



Magnetic Stirrer & Stirrer Bars

Item	Liquid Stirring Capacity	Speed	Cover Material	Catalog	Price
Magnetic Stirrer HI 200M	up to 1 liter (0.26 gallon)	100 - 1000 rpm	316 stainless steel	2679-1	\$169.00
Magnetic Stirrer HI 300N	up to 2.5 liter (0.66 gallon)	100 - 800 rpm	316 stainless steel	2679-2	\$209.00
Magnetic Stirrer HI 310N	up to 5.0 liter (1.3 gallon)	100 - 800 rpm	316 stainless steel	2679-3	\$249.00
Magnetic Stir Bar 5 x 15 mm				2679-5	\$10.00 / 10 pcs.
Magnetic Stir Bar 6 x 25 mm				2679-6	\$15.00 / 10 pcs.
Magnetic Stir Bar 8 x 50 mm				2679-7	\$35.00 / 10 pcs.
Stir Bar Retriever	Length 15"			2679-9	12.00



Haze Meter

Auto diagnostic haze in beer, haze meter is designed according to the ASBC standard for haze in beer measurements. This instrument compensates a beer color to guarantee accurate reading during the brewing process. The optical system consists of an LED and multiple detector. This meter also incorporates a continuous measurement mode to accumulate multiple reading giving a final average value. The average mode is useful to measure samples with suspended particles with different dimensions. A user-friendly interface with large backlit LCD. Acoustic signals and display code to guide the user step by step through routine operations. HI847492.

Catalog #2607 \$695.00



Digital Thermometer

T-Handle Water-proof Thermometer

Inexpensive Long-Stem Digital Thermometer in T-handle style that is easy for read out. Stainless steel probe is resistant to most laboratory chemicals.

Specifications:

- Range is -58 to 572°F and -50 to 300°C
- Resolution is 0.1° from -20 to 200°
- Accuracy is ±1°C
- Stem Length 23"

Catalog #2737 \$24.00

Digital Water-proof Pocket Thermometer

Stainless-steel probe is resistant to most laboratory chemicals.

Specifications:

- Range is -58 to 572°F and -50 to 300°C
- Resolution is 0.1° from -20 to 200°
- Accuracy is ±1°C
- Stem dia. 0.14" x 5" L.

Catalog #2736 \$19.00



Alcohol Hydrometer

Precision hydrometer for commercial use. Proof Scale, Internal Revenue Specification.

- Calibrated at 20° C
- Accuracy: plus/minus one subdivision
- Length 330 mm (13")
- Lead free

Item	Proof Range	Subdivisions	Catalog	Price
Alcohol Hydrometers	20 - 40	0.5	265-1	\$37.00
Alcohol Hydrometers	40 - 60	0.5	265-2	\$37.00
Alcohol Hydrometers	60 - 80	0.5	265-3	\$37.00
Alcohol Hydrometers	80 - 100	0.5	265-4	\$37.00
Alcohol Hydrometers	100 - 120	0.5	265-8	\$37.00
Alcohol Hydrometers	120 - 140	0.5	265-5	\$37.00
Alcohol Hydrometers	140 - 160	0.5	265-7	\$37.00
Alcohol Hydrometers	180 - 200	0.5	265-6	\$37.00
Precision Proof & Tralles Hydrometers	0 - 200	0.5	265-9	\$18.00

© G.W. KENT, INC. March, 2012

© G.W. KENT, INC. March, 2012

Hydrometer

Precision hydrometer for commercial use. Hydrometers are calibrated to show the percentage of sucrose by weight at 20° C (68° F). The data of the National Bureau of Standard are used.

Item	Range	Subdivision	Catalog	Price
0-12 Brix Hydrometers	0 - 12 brix	0.1°	266-12	\$18.00
9 - 21 Brix Hydrometers	9 - 12 brix	0.1°	266-21	\$18.00
19 - 31 Brix Hydrometers	19 - 31 brix	0.1°	266-31	\$18.00
29 - 41 Brix Hydrometers	29 - 41 brix	0.1°	266-41	\$18.00
39 - 51 Brix Hydrometers	39 - 51 brix	0.1°	266-51	\$18.00
49 - 61 Brix Hydrometers	49 - 51 brix	0.1°	266-61	\$18.00
0-12 Brix Hydrometers with built in Thermometer	0 - 12 brix	0.1°	266-12T	\$32.00
9 - 21 Brix Hydrometers with built in Thermometer	9 - 21 brix	0.1°	266-21T	\$32.00
19 - 31 Brix Hydrometers with built in Thermometer	19 - 31 brix	0.1°	266-31T	\$32.00

Item	Range	Subdivision	Catalog	Price
Plato Hydrometers with built in Thermometer	0 - 8.5 plato	0.1°	266-8	\$39.00
Plato Hydrometers with built in Thermometer	7.5 - 16 plato	0.1°	266-16	\$39.00
Plato Hydrometers with built in Thermometer	15 - 24 plato	0.1°	266-24	\$39.00

Triple Scale Hydrometers for Brewing (pack 10 per case)

Scale 0.800 - 1.15 S.G.

Catalog # 2608-1 \$30.00 / case of 10

Floating Glass Thermometer (pack 10 per case)

Temperature range 0 - 220° F.

Catalog #2608-5 \$39.00 / case of 10

Floating Thermometer with plastic protective cover

Catalog #2608-7 \$7.50 each

Dial Thermometer

2" dial face, stainless steel stem 9". Temperature range 0 - 200° F.

Catalog #2603-1 \$5.00 each

Glass Air lock

Catalog #2608-9 \$5.00 each

Carbon Dioxide Alarm / Analyzer

Carbon Dioxide is a toxic gas, colorless, odorless and undetectable by human senses. Small leaks could build up to dangerous levels as CO₂ is heavier than air. Our CO₂ analyzer is fitted with both audible and visual alarms. When excess levels of CO₂ are detected an alarm is triggered allowing you to move to a safe place.



What happens when carbon dioxide levels increase?

- 2% you may feel drowsy.
- 3% gas has a slightly narcotic effect, blood pressure rises and hearing can be impaired.
- 5% breathing will become difficult and you may feel confused.
- Over 5%, unconsciousness occurs.

Specifications:

- Range: 0.1% - 5%
- Repeatability: 2% of full scale.
- Technique: Infra red absorption.
- Response Time: <45 seconds.
- Operating Temperature: -5 to 45 C.
- Power: 110 V.

Catalog #2698 - \$645.00



Glassware



Item	Volume	Catalog	Price
250 ml. Erlenmeyer Flasks	250 ml.	261-1	\$6.50
500 ml. Erlenmeyer Flasks	500 ml.	261-2	\$9.50
1000 ml. Erlenmeyer Flasks	1000 ml.	261-3	\$14.50
2000 ml. Erlenmeyer Flasks	2000 ml.	261-4	\$29.50
Filtering Flask 250 mL.	250 ml.	262-5	\$14.00
Filtering Flask 500 mL.	500 ml.	262-6	\$20.00
Filtering Flask 100 ml.	1000 ml.	262-4	\$30.00
Beakers 250 mL.	250 ml.	263-1	\$4.50
Beakers 500 mL.	500 ml.	263-2	\$7.50
Beakers 1000 mL.	1000 ml.	263-3	\$9.00
Beakers 2000 mL.	2000 ml.	263-4	\$10.00
250 ml. Graduated Cylinders	250 ml.	264-1	\$24.00
500 ml. Graduated Cylinders	500 ml.	264-2	\$34.00
1000 ml. Graduated Cylinders	1000 ml.	264-3	\$59.00
Hydrometer Test Cylinder with plastic base	250 ml.	264-9	\$6.00
Volumetric Flask 250 mL.	250 ml.	264-5	\$16.00
Volumetric Flasks 500 mL.	500 ml.	264-6	\$20.00
Volumetric Flasks 1000 mL.	1000 ml.	264-7	\$26.00

Aroma Pot Still

Capacity 150 liter to 500 liter, equipped with ball shape hat, parallel mounted column with 3 to 10 rectification floors and amplifier. 8 tube stainless steel heat exchanger, stainless steel pipe cooling column. CIP system with spray balls in cooling column, pot still, hat and also in top & bottom column & amplifier. Two automatic thermostats for hearts and tails cuts. Water-bath insulation 1.18" and coverED with stainless steel, steam jacketed. Heating option available with gas burner or steam jacket heating.



Item	Capacity	Price
Aroma Potstill	150 liter (40 gal.)	\$49,500.00
Aroma Potstill	300 liter (80 gal.)	\$55,500.00
Aroma Potstill	500 liter (132 gal.)	\$64,500.00



Customer Pick Up:

Please allow 24 to 48 hours of order processing time for pick up at our Ypsilanti warehouse.

Dock Hours: 9 am - 4 pm Monday - Friday

Driving Directions:

Our headquarter and warehouse is located 15 miles west Detroit Metro Airport, off I-94.

- Using I-94 West, exit #183 Huron Street, at exit ramp turn right, first building on the left.
- Using I-94 East, exit #183 Huron Street, turn left, first building on the left.



© G.W. KENT, INC. March, 2012



Brewery Catalog

April, 2012

www.gwkent.com

www.BreweryParts.com



506 S. Huron Street, Ypsilanti, MI 48197

email: info@gwkent.com

Tel: 734.572.1300 Fax: 734.572.0097